



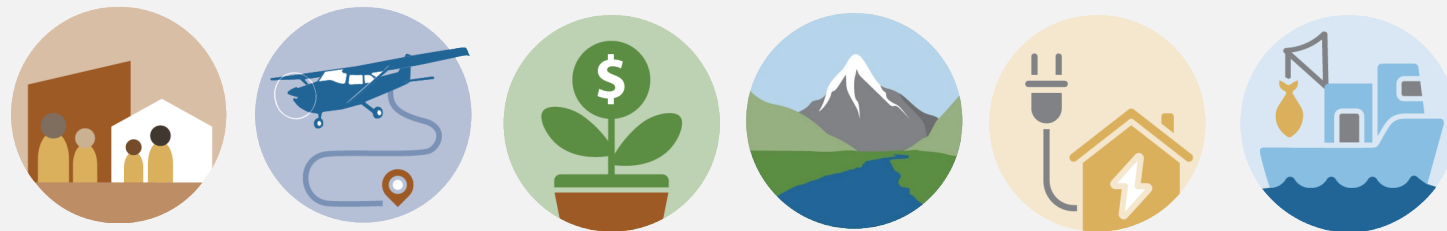
Lake and Peninsula Borough Comprehensive Plan Update

1. PLAN PURPOSE AND PROCESS

What is a Comprehensive Plan?

The plan is a guide for community leaders, residents, and partners to protect what residents value most about the region while enhancing the quality of life for current and future residents. It will include long-term goals and short-term strategies that will guide decisions about:

Community Facilities | Transportation | Economic Development | Land Use | Utilities | and More



Project Schedule and Key Milestones

Discover, Learn, and Listen		Draft and Review	Finalize and Adopt
SUMMER 2024	FALL 2024	WINTER 2024-25	SPRING 2025
<ul style="list-style-type: none"> Public participation plan Data analysis Review of previous and ongoing planning efforts Assembly member and planning commissioner interviews "Community Snapshots" 	<ul style="list-style-type: none"> Community visits and work sessions throughout Lake and Pen Borough Additional partner interviews 	<ul style="list-style-type: none"> Community plans Overall vision, goals, priorities, and strategies developed 	<ul style="list-style-type: none"> Draft regional plan released Public comment period Revise and finalize plan Begin adoption process

How to Get Involved

» Learn more and share your comments on the project website: lakepencomplan.com

» Contact the project team:

Danica Wilson
Community Development Coordinator/
Emergency Manager, Lake and Peninsula Borough
CDC@lakeandpen.com | Office: (907) 246- 3421

Meg Friedenauer
Project Manager, Agnew::Beck Consulting
meg@agnewbeck.com | Cell: 907-303-3768

2. BOROUGH SNAPSHOT

2023 Population and Age

Population: 1,344
down 20% from 2013 ↓

Median age: 33.8
up 8% from 2013 ↑

Residents 65 and older: 186
up 38% since 2013 ↑

Residents 15 and under: 397
up 2% since 2013 ↑

2023 Workforce, Earnings, and Employment

(all industries, excluding self-employment)

Average monthly employment: 923

Total earnings: \$45 million

Average monthly wage: \$4,067

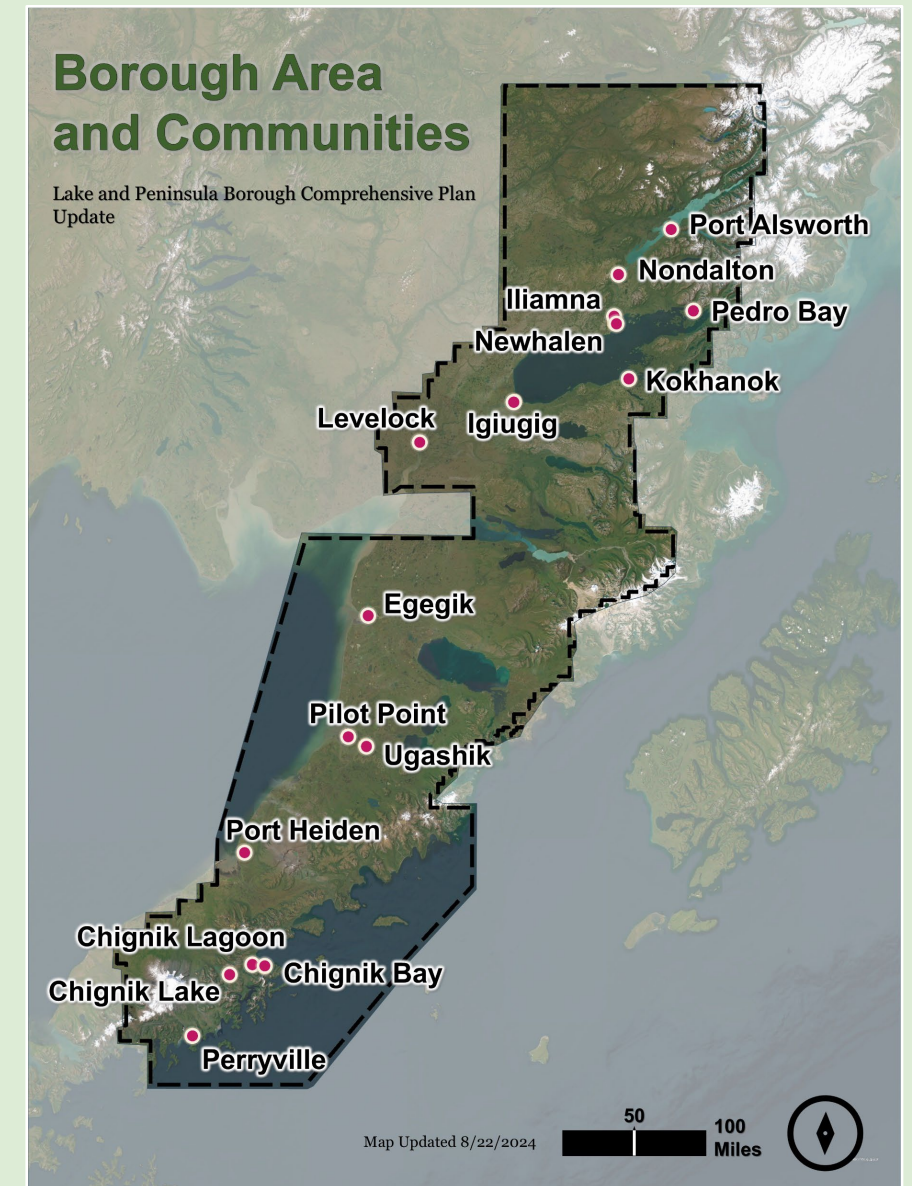
Top economic sectors in Total Earnings:

- Government:** (Federal, State, Local, and Tribal): \$15.4 million
- Manufacturing:** \$9.1 million
- Trade, Transportation, and Utilities:** \$8.6 million
- Leisure and Hospitality:** \$8.4 million

Commercial Fishing Industry

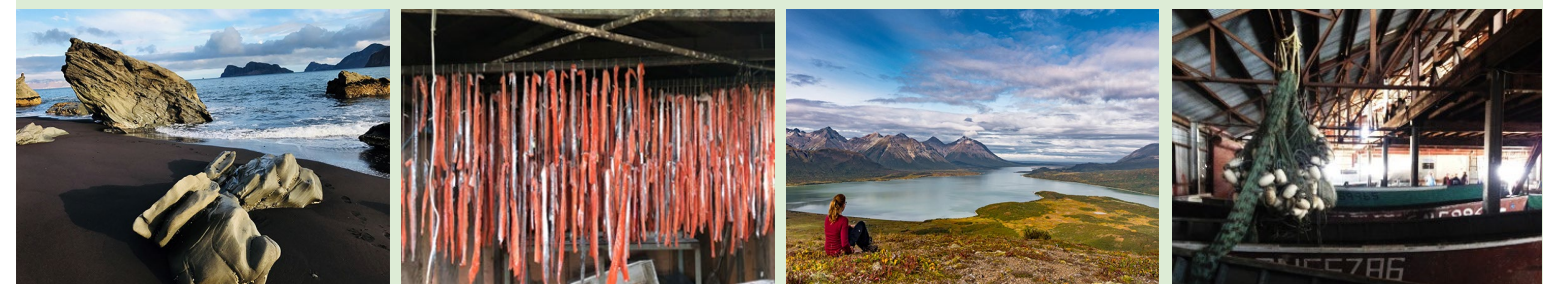
2022 pounds and value of catch by fishery permits holders

- Total gross earnings: \$7.7 million
- Pounds of fish: 7.6 million



Map source: State of Alaska Geospatial Data, 2024

Sources: Alaska Department of Labor and Workforce Development; Alaska Commercial Fisheries Entry Commission



Lake and Peninsula Borough Comprehensive Plan Update

Chignik Bay Community Snapshot

3. CHIGNIK IN THE NEWS



Chignik Bay latest to join GCI's fiber optic broadband internet project
KUCB, May 1, 2024

Chignik Hydroelectric Dam and Water Source Project receives up to \$7.2 million in DOE funding
Arctic Energy Office, Feb. 27, 2024

UAF-led group gets \$13.9 million to aid coastal climate resilience
UAF, Oct. 11, 2023

4. CHIGNIK DATA

2023 Population and School Enrollment

2023 Population: 56 | down 37% from 2013

School Enrollment: Chignik School closed in 2023

2023 Energy Costs

Average price of fuel per gallon:

Unleaded: \$6.98
#1 Heather Fuel: \$5.36
Current Fuel Prices as of 5/21/2023

Average residential cost of electricity:

Effective rate: \$0.24/kWh | Power Cost Equalization (PCE) subsidy: \$0.17/kWh

5. WHAT REMAINS RELEVANT TODAY?

Below is a selection of priorities and projects Chignik Bay identified from previous planning efforts (2012 Comprehensive Plan, 2022 Community Strategic Direction, and 2024 Capital Improvement Priority List):

- Develop a small outdoor recreation park
- Construct a public dock, with water supply and electricity
- Continue ferry service
- Encourage tourism development
- Build and operate a fish and game processing plant and cannery ("Subsistence Building")
- Implement an oil response training from SAVEC
- Construct a high tunnel garden
- Provide more activities that strengthen our people through local values
- Address, prioritize, and improve maintenance of current housing
- Complete the Dam Access Trail
- Construct a community building
- Construct a dockside warehouse

6. LOOKING AHEAD

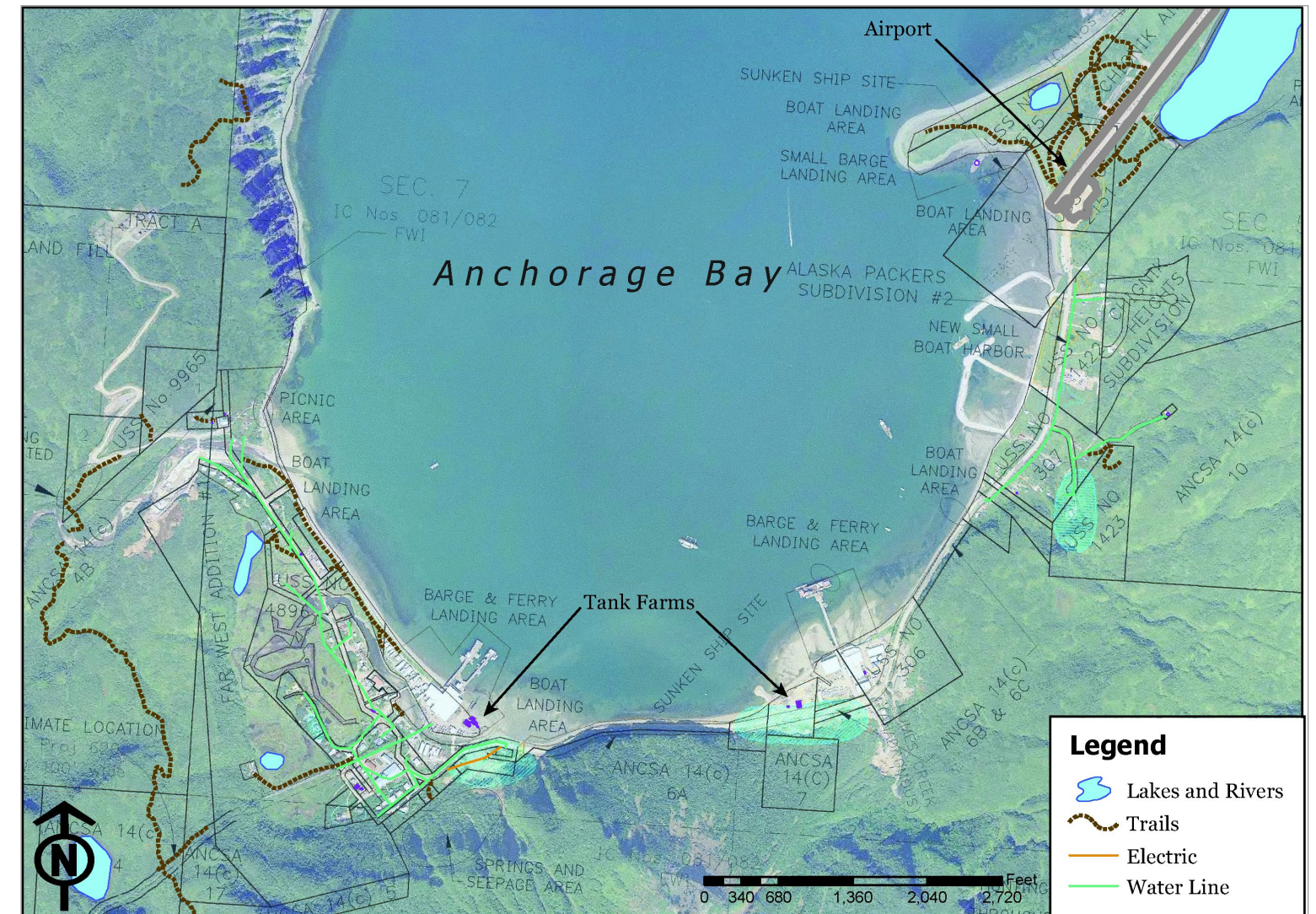
Your answers to these guiding questions will help us determine which priorities and projects to include in the Comprehensive Plan.

What do you value most about Chignik?

How has Chignik changed?

What makes it hard to live here?

What are our biggest priorities over the next 5 years?



Sources: Alaska Department of Labor and Workforce Development; Alaska Department of Commerce, Community, and Economic Development; Alaska Energy Authority. Map source: State of Alaska Department of Commerce, Community, and Economic Development, Division of Community and Regional Affairs, 2002