

# Community Plans

Lakes Area Subregion .....	2
Igiugig.....	4
Iliamna .....	9
Kokhanok .....	14
Newhalen.....	19
Nondalton .....	24
Pedro Bay .....	30
Port Alsworth .....	35
Bristol Bay Subregion .....	41
Egegik.....	43
Levelock.....	48
Pilot Point.....	54
Port Heiden .....	59
Ugashik.....	65
Pacific Subregion .....	71
Chignik Bay .....	73
Chignik Lagoon .....	81
Chignik Lake.....	87
Perryville .....	93
Sources.....	99

## Lakes Area Subregion

The Lakes Area Subregion of Alaska's Lake and Peninsula Borough encompasses the communities of **Igiugig, Iliamna, Kokhanok, Newhalen, Nondalton, Pedro Bay, and Port Alsworth**. This region is defined by its expansive freshwater systems, including Lake Iliamna—the largest lake in Alaska—and the surrounding Chigmit Mountains. The area is also home to Lake Clark National Park and Preserve. The residents of these communities are predominantly Dena'ina Athabascan and Yup'ik, who maintain a close relationship with the land and water that support their communities. Subsistence harvesting remains central to daily life. Many residents participate in the Bristol Bay commercial salmon fishery, either as permit holders, crew members, or in support roles. Tourism and recreation play a significant role in the local economy, particularly in Port Alsworth, which serves as the main entry point to Lake Clark National Park and Preserve and hosts the park's visitor center. Other communities also engage in seasonal tourism activities, including guided hunting and fishing. Local Tribal governments, schools, and health clinics provide a significant portion of year-round employment, often through positions funded by federal and state programs.

### Common Themes Discussed at 2024 Community Meetings in the Lakes Area Subregion

#### Land management and access

Communities want to maintain and gain public access to water, in part by working with the National Park Service on access issues and land management.

#### Community governance

Most communities lack land ownership, making it difficult to generate revenue in for communities.

#### Infrastructure and utilities

Bridges are a priority concern, particularly between Iliamna and Nondalton and in Port Alsworth to access the site identified for a landfill.). Keeping a consistent supply of fuel is challenging.

#### Transportation

Road maintenance is a concern, especially with how to work with Borough and state for ongoing maintenance and upkeep. There are also concerns about the high cost of air travel and maintaining access to air service as some companies and equipment are aging.

#### Elder services

Providing more services for Elders is a priority so they can come back or remain in their communities as they age.

#### Capacity

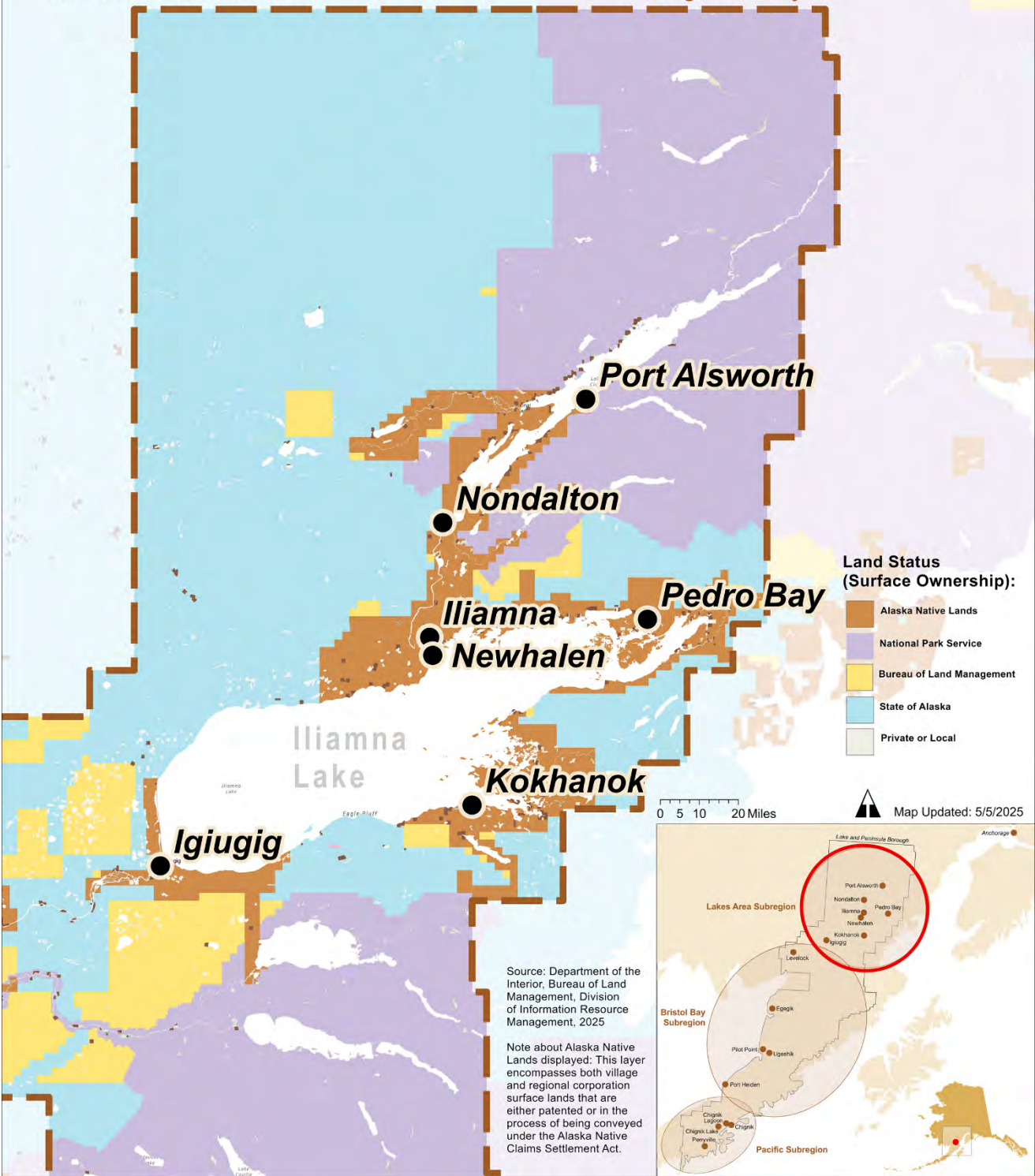
Human and skilled capacity is a concern, especially for grant research, writing, and management. There is also a lack of skilled trades in most communities.



# Lakes Area Subregion

Lake and Peninsula Borough

*Borough Boundary*





# Igiugig

The Igiugig community plan was developed through background research and community meetings and conversations with leadership members in 2024 and 2025. A list of sources can be found on page 99.



## Community Vision

Igiugig is locally driven and self-sustaining.

From Community Strategic Direction 2017-2022.

*“We are the best stewards of our land.”*

## Community Values

Our children | Safe community | Lifelong learners | Proud of identity | The freedom and lifestyle | We know how special it is here | Everything is possible | Access to our land and waters | Mutual respect | Sharing food as a language of love | Sharing what we learn | Respect for nature and the land

From 2024 community meeting notes.

## Community Trends: People, Schools, and Cost of Living



### Population

67 in 2023, up 43% from 2013. ↑



### School

21 students enrolled (K-12) in academic year 2023-24, up 50% from 2013-14. ↑



### Cost of Living

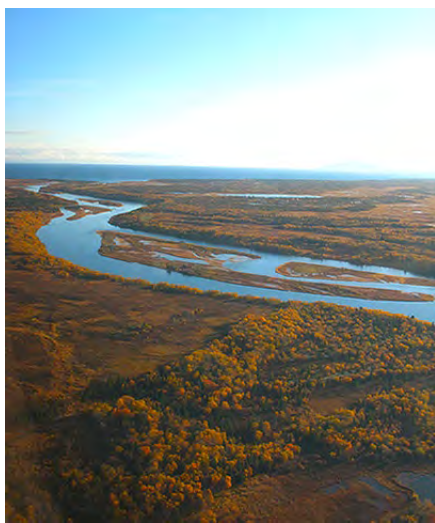
Electricity: In 2023, 100% of Igiugig’s electricity was produced by diesel generators, costing \$0.91/kWh in 2023 – up from \$0.81 in 2012, without PCE. ↑

Although not reflected in FY2023 PCE Reporting by the Igiugig Electric Company, the Native Village of Igiugig has installed and operated two grid-connected turbines installed in the Kvichak River as a demonstration project.

# Potential Community Priorities Over the Next Five Years

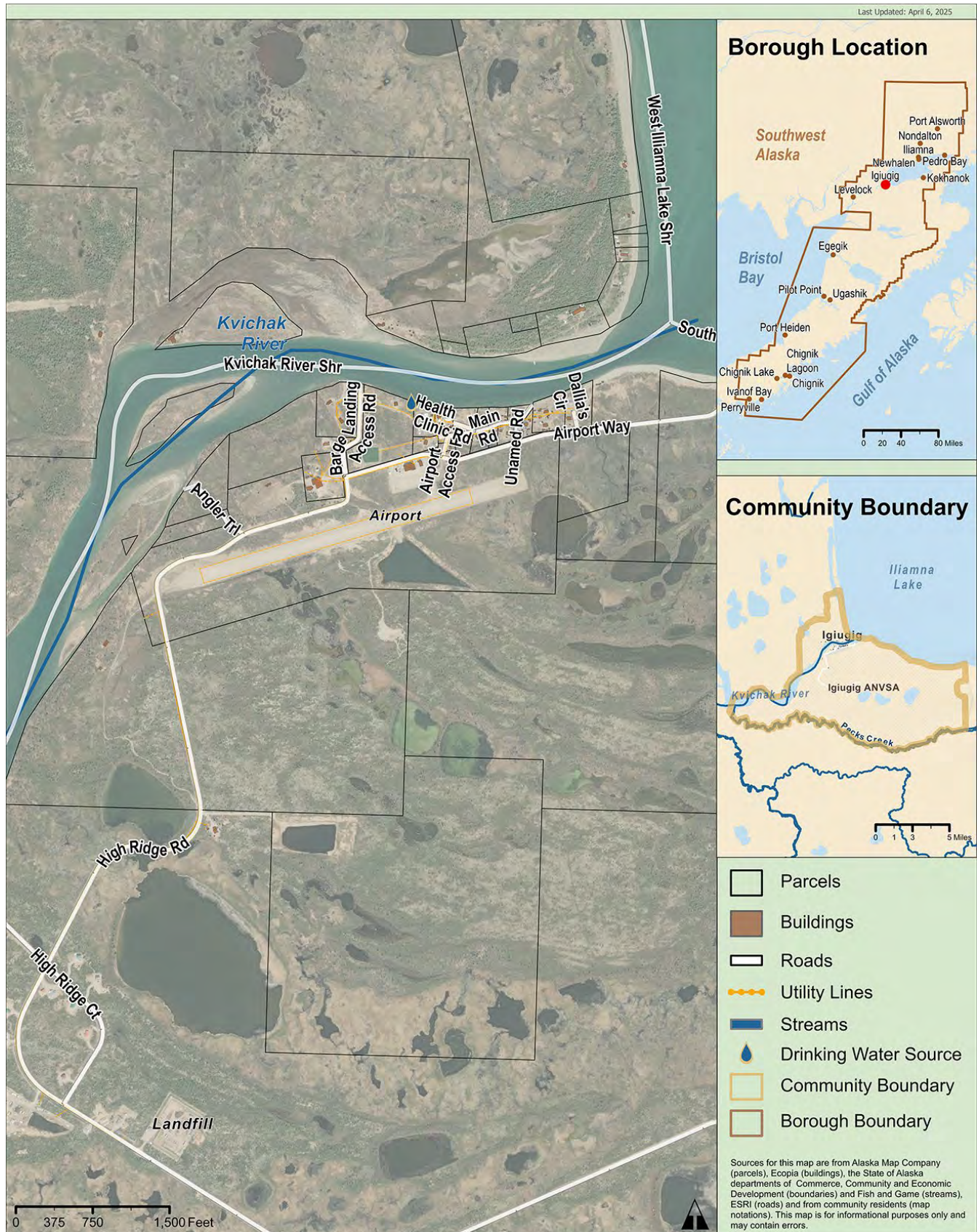
Sector	Priority
<b>Land Use and Environment</b>	<ul style="list-style-type: none"> <li>▪ <b>Continue addressing access to land and waters; maintain stewardship authority over lands and water.</b></li> <li>▪ Support Landback initiatives.</li> <li>▪ Nurture nature-based relationships and values.</li> <li>▪ Expand the trails system.</li> </ul>
<b>Housing</b>	<ul style="list-style-type: none"> <li>▪ <b>Exercise more local authority on housing funding.</b></li> <li>▪ <b>Develop more housing. *</b></li> </ul>
<b>Community Facilities and Services</b>	<ul style="list-style-type: none"> <li>▪ <b>Complete the culture center.</b></li> </ul>
<b>Transportation</b>	<ul style="list-style-type: none"> <li>▪ <b>Build the TTP Road Maintenance Building. *</b></li> <li>▪ Build Diamond Point Port Infrastructure.</li> </ul>
<b>Utilities</b>	<ul style="list-style-type: none"> <li>▪ <b>Upgrade telecom infrastructure. *</b></li> <li>▪ Explore more solar and renewable energy opportunities.</li> </ul>
<b>Economic Development</b>	<ul style="list-style-type: none"> <li>▪ <b>Take part in more subregional planning, collaboration, and capacity sharing.</b></li> <li>▪ <b>Broaden vocational education opportunities.</b></li> <li>▪ <b>Expand eco-tourism opportunities.</b></li> </ul>
<b>Culture and Wellness</b>	<ul style="list-style-type: none"> <li>▪ <b>Develop and provide education to commercial operators and visitors, like signage and flyers on values and practices.</b></li> </ul>

**Top priorities are bold.** \* Listed on 2025 Capital Improvement Project List (short- and long-term priorities).





# Map



## Community Infrastructure, Needs, and Resources

Service/Facility	Provider	Current Facilities	Issues, Notes, and Needs
<b>Igiugig Facilities and Services</b>			
<b>Water / Wastewater</b>	Village Council water well and treatment plant	Piped water and sewer, washeteria and sewer lagoon	
<b>Solid Waste</b>	Village Council	Class 3 unpermitted landfill, glass crusher, cardboard bailer, bins for plastic and aluminum, battery collection, e-waste collection, white appliance collection	
<b>Communications</b>	Phone: Bristol Bay Communications Group Internet: GCI, SALMONet		
<b>Electricity</b>	Igiugig Electric Company	Three 65kW generators, three wind turbines for greenhouse. Wood boiler.	Examining in-stream kinetic power systems upgrade (DCRA).
<b>Bulk Fuel</b>	Village Council	115,000 gallons LPSD: 5,000 gallons Total Capacity: 120,000 gallons	
<b>Public Safety</b>	State Trooper (King Salmon), BBNA Safety vehicle and boat		
<b>Fire and Emergency</b>	Volunteer Fire Department	Clinic and volunteers provide EMS; one fire truck, one patient transport vehicle, and, one emergency building.	
<b>Medical</b>	Igiugig Village Health Clinic built in 2011 – Village Council owns; SCF operates		
<b>School(s)</b>	LPSD School Building		
<b>Governance</b>	Igiugig Village Council and Tribal Office		

Service/Facility	Provider	Current Facilities	Issues, Notes, and Needs
<b>Igiugig Facilities and Services</b>			
<b>Recreation</b>		Fitness center, community greenhouse, public library, agricultural complex	
<b>Post Office</b>	USPS Post Office		Community wants their own zip code (currently shares with King Salmon)
<b>Other community facilities or services</b>			
<b>Igiugig Transportation</b>			
<b>Roads and Bridges</b>			
<b>Trails</b>			
<b>Marine</b>	Igiugig Village Council	New barge landing, boat landing	
<b>Aviation</b>	State of Alaska	3,300-foot gravel runway	The community would like to extend the runway to accommodate larger aircraft.
<b>Public transport</b>			
<b>Other transportation-related resources</b>	Local contractor	One grader, snow plow, rock crusher, compactor, dozer, dump trucks, loader, and excavators.	
<b>Igiugig Economic Development</b>			
<b>Village Corporation</b>	Igiugig Native Corporation		
<b>Freight carrier(s)</b>			



# Iliamna

The Iliamna community plan was developed through background research and community meetings and conversations with leadership members in 2024 and 2025. A list of sources can be found on page 99.



## Community Vision

The school district, borough office, and regional vocational high school are located in the regional hub of Iliamna with a road connecting all villages around the lake.

From Community Strategic Direction 2017-2022.

## Community Values

Community | Beauty | Fresh, clean water | Freedom | Easy access to Anchorage | Happy children | Healthy people | Small community (everyone knows each other) | Safe community

From 2024 community meeting notes.

## Community Trends: People, Schools, and Cost of Living



### Population

115 in 2023, up 25% from 2013. ↑



### School

89 students enrolled (K-12) in Iliamna-Newhalen School in Academic Year 2023-24, up 62% from 2013-14. ↑



### Cost of Living

- Aviation fuel (self-service): \$10.99/gallon in 2024
- Aviation fuel (Jet A, full-service): \$8.24/gallon in 2024
- Aviation fuel (Jet A, self-service): \$7.99/gallon in 2024
- Electricity: In 2023, 1% of Iliamna's electricity was produced by diesel generators and 99% from the in-river Tazimina Hydroelectric Plant, costing \$0.62/kWh in 2023 – up from \$0.61 2012, without PCE. ↑

## Potential Community Priorities Over the Next Five Years

Sector	Priority
<b>Land Use and Environment</b>	<ul style="list-style-type: none"> <li>▪ <b>Explore opportunities for co-management agreements with the National Park Service (NPS).</b></li> </ul>
<b>Housing</b>	<ul style="list-style-type: none"> <li>▪ <b>Address housing needs. *</b></li> <li>▪ Form a local housing authority.</li> </ul>
<b>Community Facilities and Services</b>	<ul style="list-style-type: none"> <li>▪ <b>Construct a dock.</b></li> <li>▪ Develop a Ferry crossing on the Newhalen River. *</li> </ul>
<b>Transportation</b>	<ul style="list-style-type: none"> <li>▪ <b>Install street lighting and signage. *</b></li> <li>▪ Enhance the trail system.</li> <li>▪ Establish walking lanes and sidewalks on roads.</li> <li>▪ Complete the Pile Bay Road improvements.</li> </ul>
<b>Utilities</b>	<ul style="list-style-type: none"> <li>▪ <b>Acquire a brusher. *</b></li> <li>▪ Develop solar energy for public facilities.</li> <li>▪ Get electrical hook-ups for new housing.</li> </ul>
<b>Economic Development</b>	<ul style="list-style-type: none"> <li>▪ <b>Promote local tourism.</b></li> <li>▪ <b>Develop regional bike paths and trails.</b></li> <li>▪ Establish Iliamna as “the” gateway community to Lake Clark National Park.</li> <li>▪ Establish partnerships with the NPS.</li> </ul>
<b>Culture and Wellness</b>	<ul style="list-style-type: none"> <li>▪ <b>Partner on a regional Elder housing/assisted living facility. *</b></li> <li>▪ Build an alcohol and drug treatment facility.</li> <li>▪ Pursue funding for food security projects.</li> </ul>
<b>Other</b>	<ul style="list-style-type: none"> <li>▪ Form a service area.</li> <li>▪ Explore self-governance options.</li> </ul>

**Top priorities are bold.** \* Listed on 2025 Capital Improvement Project List (short- and long-term priorities).





# Map





## Community Infrastructure, Needs, and Resources

Service/Facility	Provider	Current Facilities	Issues, Notes, and Needs
<b>Iliamna Facilities and Services</b>			
<b>Water / Wastewater</b>	Village Council	Community well for community building, village office, washeteria. Septic pumping.	
<b>Solid Waste</b>	Village Council	Class 3 unpermitted landfill	
<b>Communications</b>	Phone: AT&T Alascom, GCI, Interior Telephone Co./TelAlaska Internet: GCI, TelAlaska		
<b>Electricity</b>	INN Electric Cooperative	Diesel generator plant in Newhalen, Tazimina Hydroelectric Plant(960kW)	
<b>Bulk Fuel</b>	IDC is the mainfuel supplier	Crowley Fuel: 86,000 gallons Village Council Clinic: 2,000 gallons DOT/Airport: 5,000 gallons US Postal Service: 2,000 gallons FAA: 3,000 gallons Private: 84,255 gallons Total capacity: 185,255 gal	
<b>Public Safety</b>	State Trooper (King Salmon)		
<b>Fire and Emergency</b>	Fire Department		
<b>Medical</b>	Nilavena Sub-regional Clinic, South Central Foundation		
<b>School(s)</b>	LPSD School Building		
<b>Governance</b>	Village of Iliamna Village Council and Tribal Office		
<b>Recreation</b>		Recreation/Teen Center, school gym	

<b>Service/Facility</b>	<b>Provider</b>	<b>Current Facilities</b>	<b>Issues, Notes, and Needs</b>
<b>Post Office</b>	USPS Post Office	Located in Iliamna and shared with Newhalen	
<b>Other community facilities or services</b>	Village Council	Community Building	
<b>Iliamna Transportation</b>			
<b>Roads and Bridges</b>			
<b>Trails</b>			
<b>Marine</b>	Lake and Peninsula Borough	20 x 130-foot barge landing ramp	There is a Borough dock in Iliamna
<b>Aviation</b>	ADOT&PF	5,087 and 4,800-foot asphalt runway and floatplane base	
<b>Public transport</b>			
<b>Other transportation-related resources</b>		Village Maintenance Equipment	
<b>Iliamna Economic Development</b>			
<b>Village Corporation</b>	Iliamna Natives Limited		
<b>Freight carrier(s)</b>			
<b>Store(s)</b>			
<b>Tourism</b>			
<b>Iliamna Land Use</b>			
<b>Housing (approximate no.)</b>			
<b>Hazard mitigation and/or climate plans</b>			

# Kokhanok

The Kokhanok community plan was developed through background research and community meetings and conversations with leadership members in 2024 and 2025. A list of sources can be found on page 99.



## Community Vision

We are responsible for our own future with youth involvement, local jobs, and self-governance.

From Community Strategic Direction 2017-2022.

## Community Values

Water is our transportation and feeds us | Subsistence activities | Stable population | Clean air | Our land | Access to wood for fuel and building | Access to air carriers

From 2024 community meeting notes.

## Community Trends: People, Schools, and Cost of Living



### Population

131 in 2023, down 23% from 2013. ↓



### School

32 students enrolled (K-12) in academic year 2023-24, up 28% from 2013-14. ↑



### Cost of Living

- Unleaded gasoline: \$9.50/gallon in 2024.
- Heating fuel: \$10.00/gallon in 2024.
- Electricity: In 2023, 79% of Kokhanok's electricity was produced by diesel generators and 21% from wind turbines, costing \$0.97/kWh – up from \$0.90 in 2012, without PCE. ↑

In 2024, Kokhanok was funded by the U.S. Department of Energy to install a 1-MW battery energy storage system, a 100-kW solar PV, a new 100-kW wind turbine, and electric thermal storage heating units.



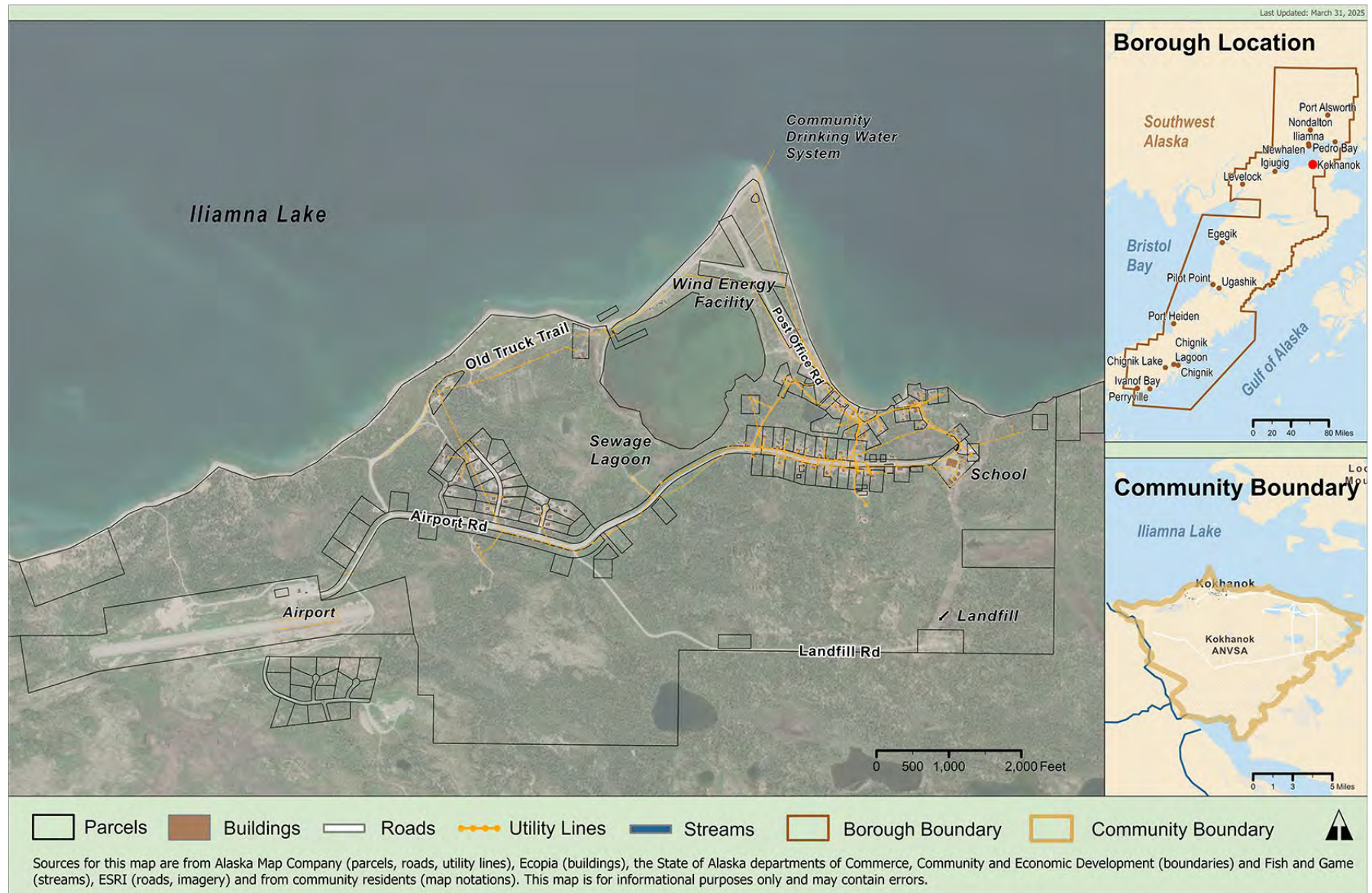


## Potential Community Priorities Over the Next Five Years

Sector	Priority
<b>Land Use and Environment</b>	<ul style="list-style-type: none"> <li>▪ <b>Complete the recycling and backhaul project. *</b></li> <li>▪ <b>Create a land development strategy. *</b></li> <li>▪ <b>Increase food security: grow our own, build more storage and a walk-in freezer; develop a community garden with greenhouse.</b></li> </ul>
<b>Housing</b>	<ul style="list-style-type: none"> <li>▪ <b>Develop new, weatherized, affordable HUD housing.</b></li> <li>▪ <b>Improve the maintenance of existing housing.</b></li> </ul>
<b>Community Facilities and Services</b>	<ul style="list-style-type: none"> <li>▪ <b>Complete electrical upgrades. *</b></li> <li>▪ <b>Acquire firefighting equipment.</b></li> <li>▪ Develop and build more Elder facilities.</li> <li>▪ Develop emergency housing and temporary shelter.</li> <li>▪ Upgrade the clinic to include housing for traveling staff.</li> <li>▪ Explore the feasibility of a youth recreation center and daycare options.</li> <li>▪ Build a new post office.</li> </ul>
<b>Transportation</b>	<ul style="list-style-type: none"> <li>▪ <b>Expand the road to connect to other communities. *</b></li> <li>▪ <b>Explore the feasibility of a breakwater. *</b></li> <li>▪ Pave the airport and other runway improvements.</li> <li>▪ Explore the feasibility of a boardwalk.</li> </ul>
<b>Utilities</b>	<ul style="list-style-type: none"> <li>▪ <b>Complete fully operational wind turbines and solar energy from the Clean Energy grant.</b></li> <li>▪ Dig wells for those not on water and sewer.</li> <li>▪ Improve communication and internet services.</li> </ul>
<b>Economic Development</b>	<ul style="list-style-type: none"> <li>▪ <b>Build human capacity in the community.</b></li> <li>▪ <b>Create new jobs.</b></li> <li>▪ <b>Focus on higher education and vocational training (i.e., electricians, mechanics).</b></li> <li>▪ Develop resources for gravel extraction.</li> <li>▪ Explore opportunities for a community-owned lodge.</li> </ul>
<b>Culture and Wellness</b>	<ul style="list-style-type: none"> <li>▪ <b>Increase the safety and security of residents, particularly our children.</b></li> <li>▪ Expand Elder services.</li> <li>▪ Hire a Village Public Safety Officer (VPSO).</li> <li>▪ Increase the availability of behavioral health services.</li> <li>▪ Cultivate creativity and arts that strengthen our connection to culture.</li> <li>▪ Enhance our Tribal governance structure.</li> <li>▪ Develop animal control resources.</li> </ul>

**Top priorities are bold.** \* Listed on 2025 Capital Improvement Project List (short- and long-term priorities).

# Map



## Community Infrastructure, Needs, and Resources

Service/Facility	Provider	Current Facilities	Issues, Notes, and Needs
<b>Kokhanok Facilities and Services</b>			
<b>Water / Wastewater</b>	Village Council	Public water well, piped water and sewer.	
<b>Solid Waste</b>	Village Council	Class 3 landfill and incinerator	
<b>Communications</b>	Phone: ACS, AT&T, Alascom, GCI Internet: Starlink; a few places use Hughesnet or GCI		
<b>Electricity</b>	Village Council	Four diesel generators (two new); two 90-kW wind turbines.	
<b>Bulk Fuel</b>	Village Council	58,900-gallon fuel tank farm	
<b>Public Safety</b>	State Trooper (King Salmon and Anchorage)		Need housing and office space for VPSO.
<b>Fire and Emergency</b>		Volunteer Fire Squad Clinic provides EMS fire hall; Code Red Unit	
<b>Medical</b>	Village Council owns, Southcentral Foundation Operates	Kokhanok Clinic built in 2007	
<b>School(s)</b>	LPSD School Building		
<b>Governance</b>	Kokhanok Village Council	Tribal Office	
<b>Recreation</b>		Playground	
<b>Post Office</b>	USPS Post Office		
<b>Other community facilities or services</b>	Village Council Community Center Old school very old, needs to be repaired/replaced		



<b>Service/Facility</b>	<b>Provider</b>	<b>Current Facilities</b>	<b>Issues, Notes, and Needs</b>
<b>Roads and Bridges</b>			
<b>Trails</b>			
<b>Marine</b>	Village Council	Concrete boat ramp, built summer 2013	
<b>Aviation</b>	ADOT&PF	3,300-foot gravel runway	Village would like to lengthen for bigger fuel planes
<b>Public transport</b>			
<b>Other transportation-related resources</b>	Village Council	Dozer, skid steer, loader, grader, snow plow, and backhoe	
<b>Village Corporation</b>	Alaska Peninsula Corporation		
<b>Freight carrier(s)</b>			
<b>Store(s)</b>			
<b>Other</b>			
<b>Housing (approximate no.)</b>			52 homes have people living in them.
<b>Hazard mitigation and/or climate plans</b>			
<b>Notable environmental hazards</b>			
<b>Other important land use notes</b>			

# Newhalen

The Newhalen community plan was developed through background research and community meetings and conversations with leadership members in 2024 and 2025. A list of sources can be found on page 99.



## Community Vision

Two communities, Newhalen and Iliamna, work together to improve and strengthen community for our kids.

From Community Strategic Direction 2017-2022.

## Community Values

People | Scenery, clean air, and water |  
Safety of community | Culture |  
Community spirit – everyone looks out for each other

From 2024 community meeting notes.

## Community Trends: People, Schools, and Cost of Living



### Population

184 in 2023, down 16% from 2013. ↓



### School

89 students enrolled (K-12) in Iliamna-Newhalen School in Academic Year 2023-24, up 62% from 2013-14. ↑



### Cost of Living

- Fuel: \$6.99-7.50/gallon in 2025.
- Heating fuel: \$6.99/gallon in 2025.
- Electricity: In 2023, 1% of Newhalen's electricity was produced by diesel generators and 99% from the in-river Tazimina Hydroelectric Plant, costing \$0.62/kWh – up from \$0.61 in 2012, without PCE. ↑



## Potential Community Priorities Over the Next Five Years

Sector	Priority
<b>Land Use and Environment</b>	<ul style="list-style-type: none"> <li>▪ <b>Protect subsistence activities.</b> <ul style="list-style-type: none"> <li>○ Renovate the recycling building into a subsistence harvest building. *</li> </ul> </li> <li>▪ <b>Support a community playground and park. *</b></li> <li>▪ Appropriate land for old vehicles. *</li> <li>▪ Address changes in the environment.</li> </ul>
<b>Housing</b>	<ul style="list-style-type: none"> <li>▪ <b>Focus on building rehabilitation.</b></li> <li>▪ <b>Address land shortages and high building costs.</b></li> </ul>
<b>Community Facilities and Services</b>	<ul style="list-style-type: none"> <li>▪ <b>Support school funding, additional teacher housing, facility upkeep, and building stronger relationships with district staff and communities.</b></li> <li>▪ Renovate the City Building. *</li> <li>▪ Upgrade the Landfill HAZMAT Storage. *</li> <li>▪ Build a subsistence harvest building. *</li> <li>▪ Build a community playground and park. *</li> </ul>
<b>Transportation</b>	<ul style="list-style-type: none"> <li>▪ <b>Address barge services.</b></li> <li>▪ Build a boat landing at the mouth of the Newhalen River.</li> <li>▪ Maintain a runway and staffing at Department of Transportation office.</li> <li>▪ Improve maintenance of the Iliamna Boat Ramp.</li> <li>▪ Explore the possibility of a large dock on the west side of the bay.</li> <li>▪ Address State and Tribal road maintenance issues.</li> </ul>
<b>Utilities</b>	<ul style="list-style-type: none"> <li>▪ <b>Support the Power Cost Equalization (PCE) program. *</b></li> <li>▪ Convert some communities to solar power.</li> <li>▪ Hydro power for INNEC (Tazimina): <ul style="list-style-type: none"> <li>○ Hydro is 99% supplying communities</li> <li>○ Diesel backup</li> </ul> </li> <li>▪ Explore wind power options.</li> </ul>
<b>Economic Development</b>	<ul style="list-style-type: none"> <li>▪ <b>Continue efforts to grow our own teachers.</b></li> <li>▪ <b>Recruit or train residents for in-demand skilled trades.</b></li> <li>▪ Develop and promote Newhalen and Iliamna as a hub for the Lakes Region.</li> </ul>
<b>Culture and Wellness</b>	<ul style="list-style-type: none"> <li>▪ <b>Explore the feasibility of a senior center and other Elder services (e.g., hospice).</b></li> <li>▪ <b>Develop a culture preservation program including teaching survival skills and Elders sharing knowledge and values with the younger generation.</b></li> <li>▪ <b>Increase public safety resources, especially to help in stopping the transportation of drugs and alcohol from Anchorage to our communities.</b></li> <li>▪ Bridge community culture and school.</li> <li>▪ Increase mental health and drug and alcohol rehabilitation services center in the region.</li> </ul>

**Top priorities are bold.** \* Listed on 2025 Capital Improvement Project List (short- and long-term priorities).



# Map



## Community Infrastructure, Needs, and Resources

Service/Facility	Provider	Current Facilities	Issues, Notes, and Needs
<b>Newhalen Facilities and Services</b>			
<b>Water / Wastewater</b>	City water treatment facility	Piped public water, septic pumping services, central sewer system, septic disposal site. No water treatment.	
<b>Solid Waste</b>	City Dump truck	Class 3 permitted landfill	
<b>Communications</b>	Phone: Interior Telephone Co./TelAlaska, At&T, Alascom, GCI Internet: GCI		
<b>Electricity</b>	INN Electric Cooperative	Diesel generator plant in Newhalen, Tazimina Hydroelectric Plant (960kW). Serves Iliamna, Newhalen, and Nondalton via electric distribution lines.	Alternative energy study completed.
<b>Bulk Fuel</b>	LPSD: 5,000 gallons City Buildings: 3,500 gallons City: 191,700 gallons Total capacity: 200,200 gallons		
<b>Public Safety</b>	State Trooper (based in King Salmon)		
<b>Fire and Emergency</b>	State Trooper (King Salmon) Volunteer firefighters, volunteer EMS, 2 BB Health CHPs, South Central Foundation Ambulance		
<b>Medical</b>	None (Use Sub regional Clinic in Iliamna)		
<b>School(s)</b>	LPSD School Building		

<b>Service/Facility</b>	<b>Provider</b>	<b>Current Facilities</b>	<b>Issues, Notes, and Needs</b>
<b>Governance</b>	Newhalen Village Tribal Village Council and Office, City of Newhalen City Council City Hall		
<b>Recreation</b>			
<b>Post Office</b>			
<b>Other community facilities or services</b>		New Recreation/Teen Center, School Gym	
<b>Roads and Bridges</b>			
<b>Trails</b>			
<b>Marine</b>			
<b>Aviation</b>			
<b>Public transport</b>			
<b>Other transportation-related resources</b>			
<b>Village Corporation</b>	Alaska Peninsula Corporation		
<b>Freight carrier(s)</b>			
<b>Store(s)</b>			
<b>Other</b>			
<b>Housing (approximate no.)</b>			
<b>Hazard mitigation and/or climate plans</b>			
<b>Notable environmental hazards</b>			
<b>Other important land use notes</b>			



# Nondalton

The Nondalton community plan was developed through background research and community meetings and conversations with leadership members in 2024 and 2025. A list of sources can be found on page 99.



## Community Vision

Nondalton will return to our traditional, cultural norm to be self-reliant and do all we can for ourselves and by ourselves by working together and partnering with others from a place of self-reliance.

From Community Strategic Direction 2017-2022.

## Community Values

Cultural identity | Subsistence | Dena'ina language | Pristine water | Sense of Community | Surrounding beauty | Self-sustaining | Privacy | Immersed in nature | Our way of life brings everyone together.

From June 2025 Community Meeting

## Community Trends: People, Schools, and Cost of Living



### Population

123 in 2023, down 34% from 2013. ↓



### School

19 students enrolled in K-12 academic year 2023-24, down 37% from 2013-14. ↓



### Cost of Living

- Gasoline: \$8.89/gallon in November 2022.
- Heating fuel: \$8.66/gallon in November 2022.
- Electricity: In 2023, 1% of Nondalton's electricity was produced by diesel generators and 99% from the in-river Tazimina Hydroelectric Plant, costing \$0.62/kWh in 2023 – up from \$0.61 in 2012, without PCE. ↑

## Potential Community Priorities Over the Next Five Years

Sector	Priority
<b>Land Use and Environment</b>	<ul style="list-style-type: none"> <li>▪ <b>More input or co-management with State for subsistence, hunting, and fishing management.</b></li> <li>▪ Brush control/forest fire control</li> <li>▪ Transition mine zone back into subsistence use zone</li> </ul>
<b>Housing</b>	<ul style="list-style-type: none"> <li>▪ <b>Housing Development*</b></li> <li>▪ VPSO Housing*</li> </ul>
<b>Community Facilities and Services</b>	<ul style="list-style-type: none"> <li>▪ <b>Complete Bulk Fuel Facility *</b></li> <li>▪ <b>Heavy Equipment Repairs*</b></li> <li>▪ <b>Equipment Storage*</b></li> <li>▪ <b>New Fire Truck*</b></li> <li>▪ Rehab Brown Building*</li> <li>▪ New Multi-Use Facility*</li> <li>▪ Community Park Improvements*</li> </ul>
<b>Transportation</b>	<ul style="list-style-type: none"> <li>▪ <b>Runway Extension*</b></li> <li>▪ <b>Road Improvement Projects*</b></li> <li>▪ Explore options for ferry service</li> <li>▪ Dock/barge landing to support ferry system</li> <li>▪ Connect to barge system in Bristol Bay- perhaps extend services up Kvichak to access the Lake area</li> </ul>
<b>Utilities</b>	<ul style="list-style-type: none"> <li>▪ <b>Sewer System Improvements*</b></li> <li>▪ <b>New Water Storage Tank*</b></li> </ul>
<b>Economic Development</b>	<ul style="list-style-type: none"> <li>▪ <b>Explore developing a local gravel pit source and purchasing necessary equipment</b></li> <li>▪ <b>Develop local maintenance capacity for fixing heavy equipment and local vehicles/ATVs</b></li> <li>▪ Get doll factory going again</li> </ul>
<b>Culture and Wellness</b>	<ul style="list-style-type: none"> <li>▪ <b>Protect culture, Native way of life, traditions, and subsistence</b></li> <li>▪ <b>Become more self-reliant as a community</b></li> <li>▪ Lessen impact on big game hunting in the area</li> </ul>

**Top priorities are bold.** \* Listed on 2025 Capital Improvement Project List (short- and long-term priorities).

# Map





## Community Infrastructure, Needs, and Resources

Service/Facility	Provider	Current Facilities	Issues, Notes, and Needs
<b>Nondalton Facilities and Services</b>			
<b>Water / Wastewater</b>	City	Infiltration gallery at Six Mile Lake for treated public water. 88,000-gallon water storage. Piped water distribution. Septic and central sewer system, sewage lagoon.	
<b>Solid Waste</b>		City Class 3 unpermitted landfill	
<b>Communications</b>	Phone: ACS, AT&T, Alascom, GCI Internet: GCI	Phone: GCI, ACS Internet: GCI, Starlink	Most ACS land lines are not inoperable.
<b>Electricity</b>	I-N-N Electric Cooperative	Diesel generator plant in Newhalen, Tazimina Hydroelectric Plant (960kW). Serves Iliamna, Newhalen, and Nondalton via electric distribution lines.	
<b>Bulk Fuel</b>	City: 26,000 gallons Village Council: 1,000 gallons LPSD: 17,900 gallons Private: 15,000 gallons Total capacity: 59,900 gallons	City Council: 43,000 gallons Village Council: 1,800 gallons LPSD: 17,900 gallons Private: 15,000 gallons Total Capacity: 77,700	
<b>Public Safety</b>	State Trooper (King Salmon)	State Trooper: (King Salmon)	
<b>Fire and Emergency</b>	Clinic provides EMS	Fire: City Volunteer Emergency: Clinic, City & Tribe	
<b>Medical</b>	Village owns, South Central Foundation Operates Clinic	South Central Foundation-Nondalton Health Clinic	
<b>School(s)</b>	LPSD School Building	LPSD-Nondalton School	

<b>Service/Facility</b>	<b>Provider</b>	<b>Current Facilities</b>	<b>Issues, Notes, and Needs</b>
<b>Governance</b>	Nondalton Village City of Nondalton City Council and City Office	Village Council and Tribal Office	
<b>Recreation</b>	Nondalton City Council	Village Basketball Court	
<b>Post Office</b>	USPS Post Office		
<b>Other community facilities or services</b>	Nondalton Tribal Council. Nondalton City Council Russian Orthodox Church	Community Center Sixmile General Store Russian Orthodox Church	
<b>Nondalton Transportation</b>			
<b>Roads and Bridges</b>	Nondalton City Council	Main Road, Second Road and Third Road.	
<b>Trails</b>	Kijik Corporation, Tribe, City	ATV trails outside of village.	
<b>Marine</b>	City Council	Boat launch	Plan and Design in place, just need construction funding.
<b>Aviation</b>	ADOT&PF	2,800 ft. runway	
<b>Public transport</b>	N/A	N/A	
<b>Other transportation-related resources</b>	Nondalton City Council Nondalton Tribal Council Nondalton Health Clinic	City has a Grader, Dozer, 2 Loaders, ATV, ATV Trailer, Trucks, SUV's and landfill Skid Steer.  Tribe has a dump truck, ATV Trailers, dozer, trucks, ATV and SUV's  Clinic: SUV, Truck	City needs maintenance on heavy equipment and Trucks.

Service/Facility	Provider	Current Facilities	Issues, Notes, and Needs
<b>Nondalton Economic Development</b>			
<b>Village Corporation</b>	Kijik Corporation		
<b>Freight carrier(s)</b>	Lake & Peninsula Airlines Lake Clark Air Iliamna Air Taxi Denaina Air Taxi Leon Alsworth-Barge services IDC-Barge Services Desert Air-Bulk Freight		
<b>Store(s)</b>	Nondalton City Council	Sixmile General Store	
<b>Other</b>			
<b>Nondalton Land Use</b>			
<b>Housing (approximate no.)</b>	51 Occupied home		Shortage of Homes for Eligible homeowners
<b>Hazard mitigation and/or climate plans</b>	BBNA	Both	
<b>Notable environmental hazards</b>	BBNA	yes	



# Pedro Bay

The Pedro Bay community plan was developed through background research and community meetings and conversations with leadership members in 2024 and 2025. A list of sources can be found on page 99.



## Community Vision

Our community is growing together in size and health while being independent and self-sustaining.

From Community Strategic Direction 2017-2022.

## Community Values

Subsistence lifestyle | Privacy and isolation of community | Watershed | Elders | Fish and berries | Community and culture resources | Everyone's very positive | Library

From 2024 community meeting notes.

## Community Trends: People, Schools, and Cost of Living



### Population

34 in 2023, down 24% from 2013. ↓



### School

Closed in 2010



### Cost of Living

- Electricity: In 2023, 100% of Pedro Bay's electricity was produced by diesel generators, costing \$0.82/kWh – down from \$0.91 in 2012, without PCE. ↓



## Potential Community Priorities Over the Next Five Years

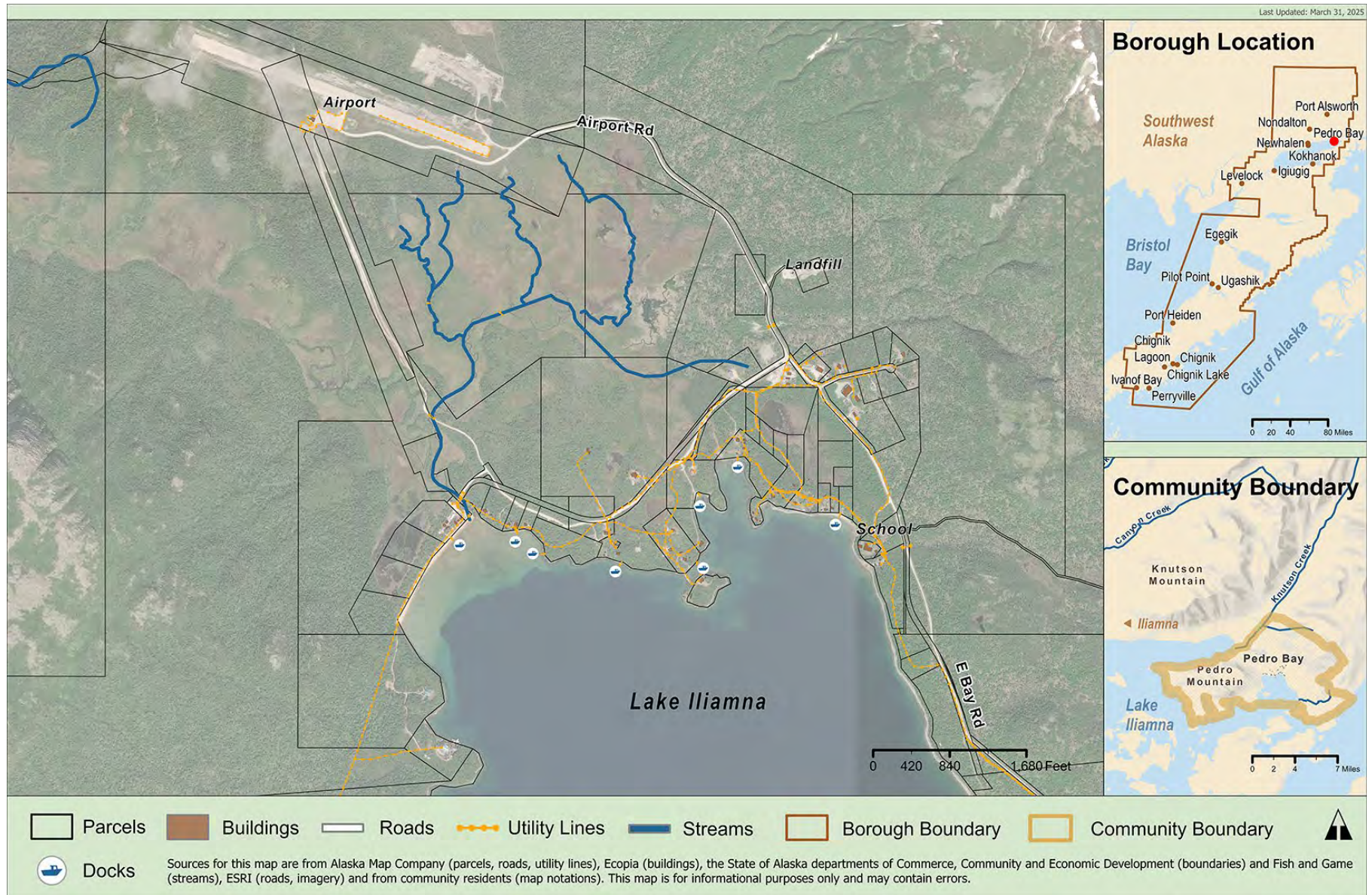
Sector	Priority
<b>Land Use and Environment</b>	<ul style="list-style-type: none"> <li>▪ <b>Protect access to subsistence activities.</b></li> </ul>
<b>Housing</b>	<ul style="list-style-type: none"> <li>▪ <b>Develop infrastructure needed for housing development.</b></li> <li>▪ <b>Develop more housing of any type.</b></li> </ul>
<b>Community Facilities and Services</b>	<ul style="list-style-type: none"> <li>▪ <b>Upgrade the old generator building. *</b></li> <li>▪ <b>Build a new equipment storage building. *</b></li> <li>▪ <b>Pursue boat harbor improvements.</b></li> <li>▪ Establish community use of the school building.</li> <li>▪ Explore the feasibility of aging-in-place Elder regional facilities and services.</li> </ul>
<b>Transportation</b>	<ul style="list-style-type: none"> <li>▪ <b>Build a shelter at the airport.</b></li> <li>▪ <b>Maintain roads.</b></li> </ul>
<b>Utilities</b>	<ul style="list-style-type: none"> <li>▪ <b>Acquire a brusher. *</b></li> <li>▪ Develop solar energy for public facilities.</li> <li>▪ Get electrical hook-ups for new housing.</li> </ul>
<b>Economic Development</b>	<ul style="list-style-type: none"> <li>▪ <b>Train and hire skilled workers for building, home, and equipment maintenance needs.</b></li> </ul>
<b>Culture and Wellness</b>	<ul style="list-style-type: none"> <li>▪ <b>Develop a community garden and greenhouses.</b></li> </ul>

**Top priorities are bold.** \* Listed on 2025 Capital Improvement Project List (short- and long-term priorities).





# Map





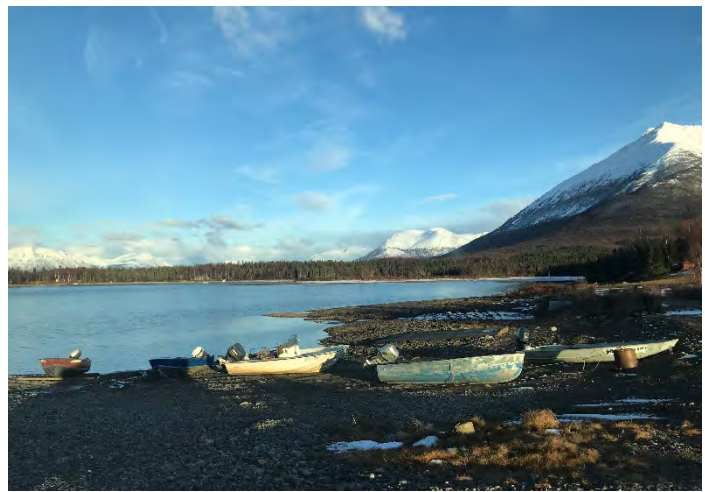
## Community Infrastructure, Needs, and Resources

Service/Facility	Provider	Current Facilities	Issues, Notes, and Needs
<b>Pedro Bay Facilities and Services</b>			
<b>Water / Wastewater</b>	Village Council	Septic pumping services, sewage lagoon, washeteria.	
<b>Solid Waste</b>	Village Council	Class 3 unpermitted landfill.	
<b>Communications</b>	Phone: ACS, AT&T, Alascom, GCI Internet: GCI		
<b>Electricity</b>	Village Council	Three diesel generators (95kW, and two 58kW)	Hydroelectric Feasibility and Planning Study completed
<b>Bulk Fuel</b>	Village Council: 64,000 gallons LPSD: 28,200 gallons Total capacity: 92,200 gallons		
<b>Public Safety</b>	State Trooper (King Salmon)		
<b>Fire and Emergency</b>	Clinic provides EMS Code Red Unit		
<b>Medical</b>	Pedro Bay Clinic Village Council owns; SouthCentral operates		
<b>School(s)</b>	LPSD School Building		
<b>Governance</b>	Pedro Bay Village, Village Council, and Tribal office		
<b>Recreation</b>			
<b>Post Office</b>	USPS Post Office		
<b>Other community facilities or services</b>	Village Council Community building		
<b>Roads and Bridges</b>			

<b>Service/Facility</b>	<b>Provider</b>	<b>Current Facilities</b>	<b>Issues, Notes, and Needs</b>
<b>Trails</b>			
<b>Marine</b>	Village Council	Barge landing area	
<b>Aviation</b>		3,000-foot gravel runway	
<b>Public transport</b>			
<b>Other transportation-related resources</b>		One grader and push dozer	
<b>Village Corporation</b>	Pedro Bay Corporation		
<b>Freight carrier(s)</b>			
<b>Store(s)</b>			
<b>Tourism</b>			
<b>Housing (approximate no.)</b>			
<b>Hazard mitigation and/or climate plans</b>			
<b>Notable environmental hazards</b>			
<b>Other important land use notes</b>			

# Port Alsworth

The Port Alsworth community plan was developed through background research and community meetings and conversations with leadership members in 2024 and 2025. A list of sources can be found on page 99.



## Community Vision

Port Alsworth will continue to grow through adherence to our purpose and values and we will embrace others who wish to work with us to maintain our exceptional quality of life.

From Community Strategic Direction 2017-2022.

## Community Values

Access to subsistence hunting and fishing | Family | Great place to raise children | Focus on workforce development | Neighborly and strong community spirit

From 2024 community meeting notes.

## Community Trends: People, Schools, and Cost of Living



### Population

179 in 2023, up 16% from 2013. ↑



### School

38 students enrolled (K-12) in academic year 2023-24, down 33% from 2013-14. ↓



### Cost of Living

- Diesel: \$8.68/gallon in 2025.
- Heating oil: \$8.37/gallon in 2025.
- Electricity: In 2023, 100% of Port Alsworth's electricity was produced by diesel generators, costing \$0.83/kWh – up from \$0.67 in 2012, without PCE. ↑



## Potential Community Priorities Over the Next Five Years

Sector	Priority
<b>Land Use and Environment</b>	<ul style="list-style-type: none"> <li>▪ <b>Develop more connection with the National Park Service.</b></li> <li>▪ Keep exploring ways to address tide land permit issue.</li> </ul>
<b>Housing</b>	<ul style="list-style-type: none"> <li>▪ Develop and extend electrical distribution system and other infrastructure, like roads, that will open up more land for housing development.</li> </ul>
<b>Community Facilities and Services</b>	<ul style="list-style-type: none"> <li>▪ <b>Complete the clinic expansion.</b></li> </ul>
<b>Transportation</b>	<ul style="list-style-type: none"> <li>▪ <b>Improve existing roads and trails and create access to developable land. *</b> <ul style="list-style-type: none"> <li>○ Connect community roads.</li> <li>○ Improve infrastructure of trails to roads.</li> </ul> </li> <li>▪ <b>Improve public access to the water, including access for a barge landing or boat launch.</b></li> <li>▪ <b>Explore the potential for a public airport, marina, barge landing, road improvements, and bridge to cross the river. *</b></li> <li>▪ <b>Develop a public-supported airport that is not in the middle of town. *</b></li> <li>▪ Educate new and part-time residents on ATV safety and snow machines.</li> <li>▪ Construct a boat storage facility.</li> <li>▪ Encourage safety around the airport, specifically for the summer population and guests.</li> </ul>
<b>Utilities</b>	<ul style="list-style-type: none"> <li>▪ <b>Explore alternative energy options, including hydro power in a local river. *</b></li> <li>▪ Develop a community ash fill and septic lagoon to better locally dispose of trash without impacting our clear water. *</li> <li>▪ Explore the possibility of tying into the Tazimina/INNEC system.</li> </ul>
<b>Economic Development</b>	<ul style="list-style-type: none"> <li>▪ <b>Address fuel delivery issues and the aging airplane infrastructure that could potentially affect fuel delivery to all communities.</b></li> </ul>
<b>Culture and Wellness</b>	<ul style="list-style-type: none"> <li>▪ <b>Construct a new building for the Fire Department and First Responders. *</b></li> </ul>

**Top priorities are bold.** \* Listed on 2025 Capital Improvement Project List (short- and long-term priorities).



# Map



## Community Infrastructure, Needs, and Resources

Service/Facility	Provider	Current Facilities	Issues, Notes, and Needs
<b>Port Alsworth Facilities and Services</b>			
<b>Water / Wastewater</b>		No public water or sewer service	
<b>Solid Waste</b>		No landfill	
<b>Communications</b>	Phone: ACS, AT&T, Alascom, GCI Internet: GCI		
<b>Electricity</b>	Tanalian Electric Cooperative	Three diesel engines: 2 ea. John Deere 6090, 220kW; 1 ea. Detroit Diesel Series 60, 350kW	
<b>Bulk Fuel</b>	Lake Clark National Park: 20,955 gallons LPSD: 15,000 gallons Private: 29,800 gallons Tanalian Electric Co.: 63,000 gallons Total capacity: 128,755 gal		
<b>Public Safety</b>	State Trooper from Anchorage (Iliamna Trooper Post has not yet been filled) National Park Service law enforcement ranger		
<b>Fire and Emergency</b>	Volunteer Fire Department, Code Red Unit Fire Hall/Meeting Hall		
<b>Medical</b>	South Central Clinic: Port Alsworth Improvement Corporation (PAIC) Building Port Alsworth First Responders: PAIC Building		

<b>Service/Facility</b>	<b>Provider</b>	<b>Current Facilities</b>	<b>Issues, Notes, and Needs</b>
<b>School(s)</b>	LPSD School Building		
<b>Governance</b>	PAIC Building		
<b>Recreation</b>			
<b>Post Office</b>	USPS Post Office		
<b>Other community facilities or services</b>	LPSD School Building		
<b>Roads and Bridges</b>			
<b>Trails</b>			
<b>Marine</b>			The PAIC public boat landing waterfront is private property and the beach is not accessible. The community would like to develop a separate deep-water landing for public use and barge access.
<b>Aviation</b>		Two privately-owned airports: both have gravel runways, 4,200 feet and 3,000 feet	Community desire for a public airport
<b>Public transport</b>			
<b>Other transportation-related resources</b>		One grader	
<b>Village Corporation</b>	Tanalian, Inc.		
<b>Freight carrier(s)</b>	Iliamna Development Corporation	(barge based in Iliamna)	
<b>Store(s)</b>	The Farm Lodge		Farm fresh food in the summer

Service/Facility	Provider	Current Facilities	Issues, Notes, and Needs
<b>Housing (approximate no.)</b>		100 housing units (multi-family dwellings are counted per apartment)	
<b>Hazard mitigation and/or climate plans</b>			Lake and Peninsula Borough Hazard Mitigation Plan
<b>Notable environmental hazards</b>			Wildland fires
<b>Other important land use notes</b>			



## Bristol Bay Subregion

The Bristol Bay Subregion of Alaska's Lake and Peninsula Borough includes the communities of **Egegik, Levelock, Pilot Point, Port Heiden, and Ugashik**. Situated along the southern coast of the Alaska Peninsula, these communities are nestled between the Bering Sea and the Aleutian Range. The region is defined by tundra landscapes, braided river systems, and proximity to major river systems such as the Egegik and Ugashik Rivers, which support some of the world's most productive wild salmon runs. The Katmai National Park and Preserve and the Becharof National Wildlife Refuge, both of which protect critical salmon habitat and diverse wildlife populations, are in this area of the borough. Many residents also participate in the Bristol Bay commercial salmon fishery. Tourism and recreation also play a significant role in the economy, particularly in areas offering sport fishing and wildlife viewing opportunities. Local Tribal governments, schools, and health clinics provide a significant portion of year-round employment. While the communities of King Salmon and Naknek are considered the regional hub for this area, neither community is part of the borough.



### Common Themes Discussed at 2024 Community Meetings in the Bristol Bay Subregion

#### **Fisheries**

Protecting fisheries is a priority.

#### **Land access**

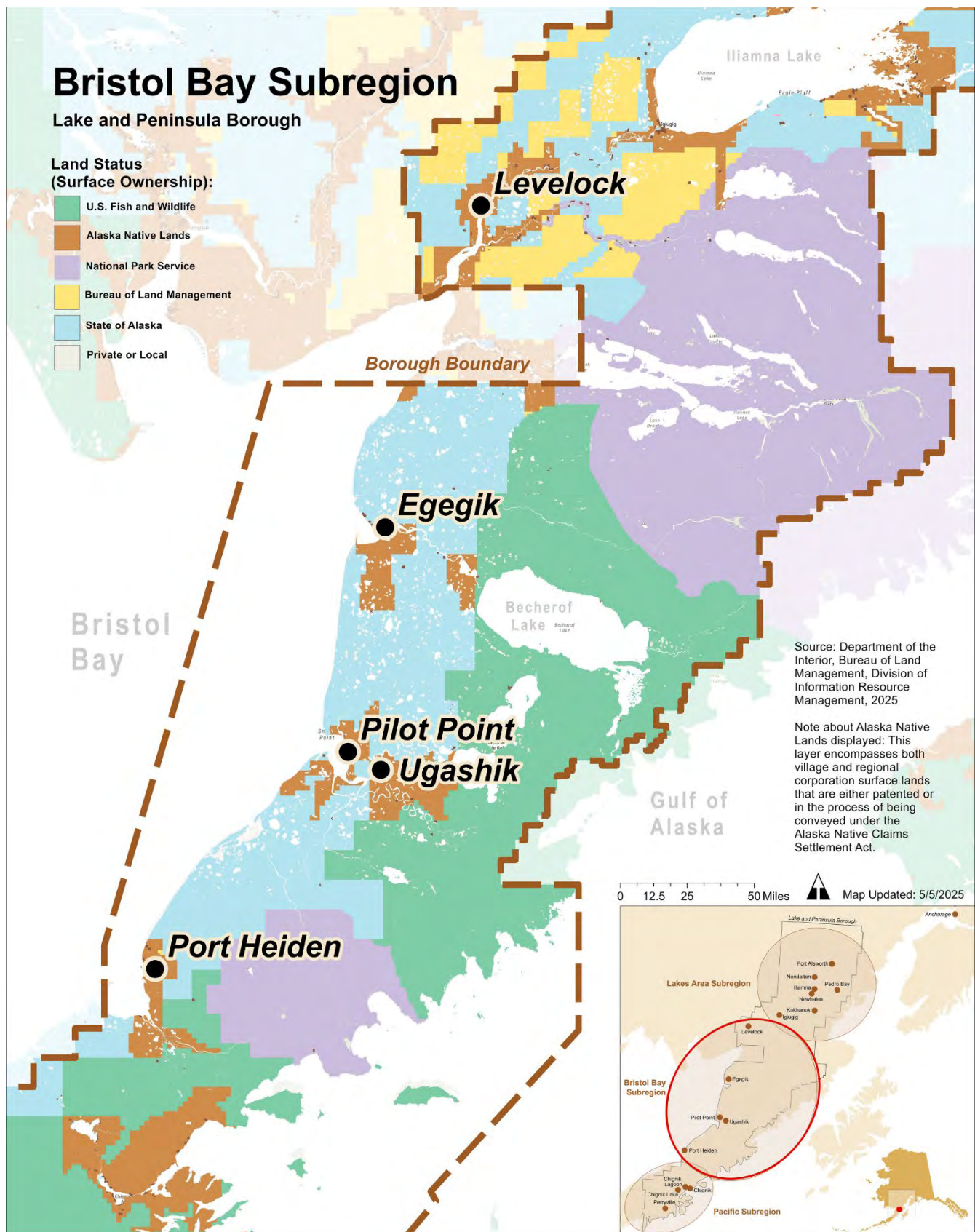
Maintaining access to the land and water, especially for subsistence activities, is vital to the communities and their wellbeing.

#### **Capacity**

Building and keeping human and skilled capacity is a concern, especially for grant research, writing, and management. There is also a lack of skilled trades in most communities.

#### **Lack of employment**

Employment opportunities are lacking in many communities, contributing to population decline and concerns about the future.





# Egegik

The Egegik community plan was developed through background research and community meetings and conversations with leadership members in 2024 and 2025. A list of sources can be found on page 99.



## Community Vision

Egegik is a healthy community that thrives, is proud, and independent.

From Community Strategic Direction 2017-2022.

## Community Values

Tight knit community | It's home | Privacy | Safe | People are friendly | Access to outdoors, clean water, and views | Subsistence lifestyle

From 2025 community meeting notes.

## Community Trends: People, Schools, and Cost of Living



### Population

29 in 2023, down 74% from 2013. ↓



### School

Closed in 2015.



### Cost of Living

- Unleaded gasoline: \$6.15/gallon (2025)
- Heating fuel: \$5/gallon Propane: \$10.60/gallon (2025)
- Electricity: In 2023, 100% of Egegik's electricity was produced by diesel generators, costing \$0.65 per kWh in 2023, down from \$0.86 2012, without PCE. ↓

## Potential Community Priorities Over the Next Five Years

Sector	Priority
<b>Land Use and Environment</b>	Install retaining wall over Church Point for erosion Lack of local ownership of waterfront property More community access to beach and river front
<b>Housing</b>	Open property for housing development
<b>Community Facilities and Services</b>	Reopen school Acquire school from the borough and open gym for community use Explore opportunities for community use of cannery facilities
<b>Transportation</b>	Airport lighting and Improvements* Runway Study* Crown the Runway* Pave the airport Connect all village via a “winter road” Roads and access to subsistence activities, i.e., “Sal’s Pit” Establish walking trail to lake
<b>Utilities</b>	Water Tank Bypass* Tank Farm Repair* BOS (incinerator) repair at landfill* Explore wind generation (revisit the wind study conducted previously; consider a renewed test at different location.)
<b>Economic Development</b>	Address high cost of freight Establish a store in the community and better access to food and household goods Job generation Build relationship between city and Tribe
<b>Culture and Wellness</b>	Open school gym for community and use as a wellness center with opportunities for activity and recreation Establish outdoor park

**Top priorities are bold.** \* Listed on 2025 Capital Improvement Project List (short- and long-term priorities).



# Map



## Community Infrastructure, Needs, and Resources

Service/Facility	Provider	Current Facilities	Issues, Notes, and Needs
<b>Egegik Facilities and Services</b>			
<b>Water / Wastewater</b>	City	Four community wells, a 100,000 gallon water storage tank, water treatment plant, piped sewer system, and sewage lagoon.	
<b>Solid Waste</b>		City Class 3 permitted landfill and B.O.S. (Batch Oxidation System).	B.O.S. Completely rebuilt in 2017.
<b>Communications</b>	Phone: ACS, AT&T, GCI. Internet: HughesNet, GCI and Velocity		
<b>Electricity</b>	City	City Generator Plant: Four generators; three 210 KW and one 400 KW.	Upgraded electrical distribution and lighting. Generator Plant new in 2013. Distribution updates 2014-2016.
<b>Bulk Fuel</b>	City	City Diesel and Heating Fuel: 118,000 gallons Gasoline: 20,000 gallons	
<b>Public Safety</b>	State Trooper (King Salmon)		
<b>Fire and Emergency</b>			
<b>Medical</b>	Village Council owns; BBAHC operates	Egegik Village Clinic, built in 2003.	
<b>School(s)</b>	LPSD School Building, closed in 2015		
<b>Governance</b>	City Hall and Egegik Village		
<b>Recreation</b>			
<b>Post Office</b>	USPS Post Office		
<b>Other community facilities or services</b>	City	Fisherman's Hall Showers and Laundry.	

Service/Facility	Provider	Current Facilities	Issues, Notes, and Needs
<b>Egegik Transportation</b>			
<b>Roads and Bridges</b>			
<b>Trails</b>			
<b>Marine</b>	City	Dock rebuilt in 2011	
<b>Aviation</b>	City	6,000' gravel runway and 1,700' gravel cross strip	
<b>Public transport</b>			
<b>Other transportation-related resources</b>	City	City owns three dozers, one grader, two dump trucks, two backhoes, three loaders, two excavators, telehandler, tele-truck, and skid-steer	
<b>Village Corporation</b>			
<b>Freight carrier(s)</b>			
<b>Store(s)</b>			
<b>Other</b>			
<b>Housing (approximate no.)</b>			
<b>Hazard mitigation and/or climate plans</b>			
<b>Notable environmental hazards</b>			
<b>Other important land use notes</b>			



# Levelock

The Levelock community plan was developed through background research and community meetings and conversations with leadership members in 2024 and 2025. A list of sources can be found on page 99.



## Community Vision

Residents are active and engaged in the village.

From Community Strategic Direction 2017-2022.

## Community Values

Solitude, quiet, and remoteness | The river | Subsistence lifestyle | Community members | The school and children are the heart of the village | Fisheries and our land

From 2024 community meeting notes.

## Community Trends: People, Schools, and Cost of Living



### Population

57 in 2023, down 31% from 2013. ↓



### School

10 students enrolled (K-12) in academic year 2023-24, down 41% from 2013-14. ↓



### Cost of Living

- Unleaded gasoline: \$6.70/gallon in 2024.
- Heating fuel: \$6.47/gallon in 2024.
- Electricity: In 2023, 100% of Levelock's electricity was produced by diesel generators, costing \$1.35/kWh – up from \$0.70 in 2012, without PCE. ↑



## Potential Community Priorities Over the Next Five Years

Sector	Priority
<b>Land Use and Environment</b>	<ul style="list-style-type: none"> <li>▪ <b>Protect fisheries, land, and subsistence rights.</b></li> </ul>
<b>Housing</b>	<ul style="list-style-type: none"> <li>▪ <b>Pursue housing rehabilitation and development.</b></li> </ul>
<b>Community Facilities and Services</b>	<ul style="list-style-type: none"> <li>▪ <b>Maintain infrastructure.</b></li> <li>▪ <b>Acquire a front-end loader. *</b></li> <li>▪ Get a maintenance contract for heavy equipment.</li> </ul>
<b>Transportation</b>	<ul style="list-style-type: none"> <li>▪ <b>Address dock and beach erosion. *</b></li> <li>▪ <b>Decide on a new dock location.</b></li> <li>▪ Develop trails to access hunting and berries.</li> <li>▪ Create a boat storage area.</li> </ul>
<b>Utilities</b>	<ul style="list-style-type: none"> <li>▪ <b>Relocate fuel tank farm.</b></li> <li>▪ Pursue renewable energy projects including: <ul style="list-style-type: none"> <li>○ Develop a large-scale hydro project.</li> <li>○ Develop wind and solar projects for individual homes.</li> <li>○ Maintain support for the tidal energy project.</li> </ul> </li> </ul>
<b>Economic Development</b>	<ul style="list-style-type: none"> <li>▪ <b>Fulfill grants that have been awarded.</b></li> <li>▪ <b>Continue work on the fish processing plant.</b></li> <li>▪ <b>Acquire fuel and water trucks.</b></li> <li>▪ Explore gaining tax authority.</li> <li>▪ Diversify jobs and skills available in community including construction and trade job opportunities (carpenters, foremen, forest firemen, wood clearing, road maintenance, freight hauling).</li> <li>▪ Develop more regional collaboration for barging service.</li> <li>▪ Recruit and increase the number of people interested in and holding fishing permits.</li> </ul>
<b>Culture and Wellness</b>	<ul style="list-style-type: none"> <li>▪ <b>Explore options to keep the school from closing and remain viable.</b></li> <li>▪ <b>Create more opportunities for young people by involving them more in decision-making.</b></li> <li>▪ <b>Increase resident engagement in Council meetings.</b></li> <li>▪ <b>Continue encouraging people to come back to the community.</b></li> <li>▪ Provide financial education for young people.</li> <li>▪ Provide more place-based education across the school district (e.g., shop class, boat building).</li> <li>▪ Increase interaction with children and respect for Elders.</li> <li>▪ Strengthen local partnerships and communication among residents.</li> </ul>

**Top priorities are bold.** \* Listed on 2025 Capital Improvement Project List (short- and long-term priorities).



# Map





## Community Infrastructure, Needs, and Resources

Service/Facility	Provider	Current Facilities	Issues, Notes, and Needs
<b>Levelock Facilities and Services</b>			
<b>Water / Wastewater</b>	Village Council	Septic pumping services Washeteria in Multi-Purpose Center	
<b>Solid Waste</b>	Village Council	Class 3 unpermitted landfill	
<b>Communications</b>	Phone: Bristol Bay Communications Group, AT&T, Alascom, GCI Internet: GCI		
<b>Electricity</b>	Levelock Electrical Cooperative	Three generators (two 65kW, 100 kW) in generator plant building	
<b>Bulk Fuel</b>		Village Council: 120,000 gallons diesel + 18,000 gallons gasoline LPSD: 31,500 gallons Total capacity: 169,500 gallons	
<b>Public Safety</b>	State Trooper (King Salmon)		
<b>Fire and Emergency</b>	Levelock Clinic provides EMS		
<b>Medical</b>	Levelock Clinic: Village Council owns, BBAHC operates		
<b>School(s)</b>	LPSD School Building		
<b>Governance</b>	Levelock Village Council and Tribal Office		
<b>Recreation</b>			

Service/Facility	Provider	Current Facilities	Issues, Notes, and Needs
<b>Post Office</b>	US Postal Office		
<b>Other community facilities or services</b>	Village Council	Multi-Purpose Center	
<b>Levelock Transportation</b>			
<b>Roads and Bridges</b>			
<b>Trails</b>			
<b>Marine</b>			Improvised barge landing and one dock in poor condition; not maintained. Feasible dock in NOAA grant-boat haul; adding to CIP list for assistance from LPB.
<b>Aviation</b>	ADOT&PF	State-owned airstrip 3,280 ft long	
<b>Public transport</b>			
<b>Other transportation-related resources</b>		Village garage, front end loaders, CAT, dump truck, septic pump truck, forklift, backhoe, compactor	
<b>Village Corporation</b>	Levelock Natives Limited		
<b>Freight carrier(s)</b>	Grant Aviation		
<b>Store(s)</b>			
<b>Other</b>			
<b>Housing (approximate no.)</b>	10 houses (2 HUD) can be rehabbed		

Service/Facility	Provider	Current Facilities	Issues, Notes, and Needs
<b>Hazard mitigation and/or climate plans</b>			
<b>Notable environmental hazards</b>			
<b>Other important land use notes</b>			



# Pilot Point

The Pilot Point community plan was developed through background research and community meetings and conversations with leadership members in 2024 and 2025. A list of sources can be found on page 99.



## Community Vision

Thriving community of self-sustaining people.

From Community Strategic  
Direction 2017-2022.

## Community Values

Good people | Remote, in the wilderness – we're free out here | Fishing community | Fishery | Fresh air | It's home | Subsistence lifestyle, berries | Good southern exposure | Pilot Point is beautiful!

From 2024 community meeting notes.

## Community Trends: People, Schools, and Cost of Living



### Population

59 in 2023, down  
14% from 2013. ↓



### School

Closed in 2023



### Cost of Living

- Electricity: In 2023, 100% of Pilot Point's electricity was produced by diesel generators, costing \$0.60/kWh – up from \$0.50 in 2012, without PCE. ↑

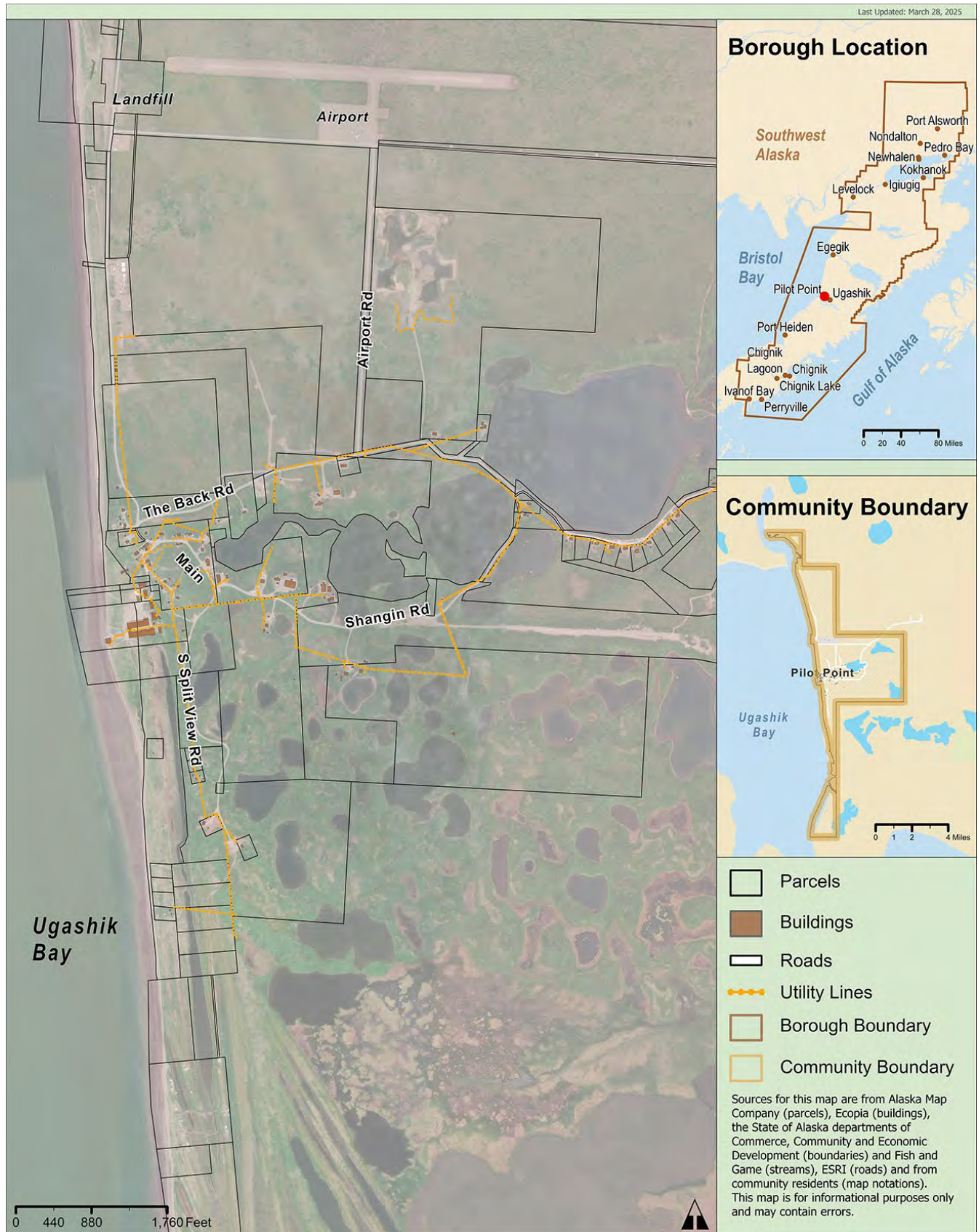


## Potential Community Priorities Over the Next Five Years

Sector	Priority
<b>Land Use and Environment</b>	<ul style="list-style-type: none"> <li>▪ <b>Protect/repair the bulkhead.</b></li> <li>▪ <b>Order equipment to repair infrastructure for erosion control.</b></li> </ul>
<b>Housing</b>	<ul style="list-style-type: none"> <li>▪ <b>Build housing that can attract people back to the village.</b></li> </ul>
<b>Community Facilities and Services</b>	<ul style="list-style-type: none"> <li>▪ <b>Build a shop building to keep equipment repaired.</b></li> </ul>
<b>Transportation</b>	<ul style="list-style-type: none"> <li>▪ <b>Construct a cross-strip 5,000-ft cargo runway with lights.</b></li> <li>▪ <b>Acquire a dozer. *</b></li> </ul>
<b>Utilities</b>	<ul style="list-style-type: none"> <li>▪ <b>Set up a battery system and upgrade aging electrical grid and two generators to accommodate new wind and solar.</b></li> </ul>
<b>Economic Development</b>	<ul style="list-style-type: none"> <li>▪ <b>Develop more job opportunities that can bring people back to the village.</b></li> <li>▪ <b>Create an affordable pathway for young or new people to enter the fishery.</b></li> </ul>
<b>Culture and Wellness</b>	<ul style="list-style-type: none"> <li>▪ <b>Reopen the school.</b></li> </ul>

**Top priorities are bold.** \* Listed on 2025 Capital Improvement Project List (short- and long-term priorities).

# Map



## Community Infrastructure, Needs, and Resources

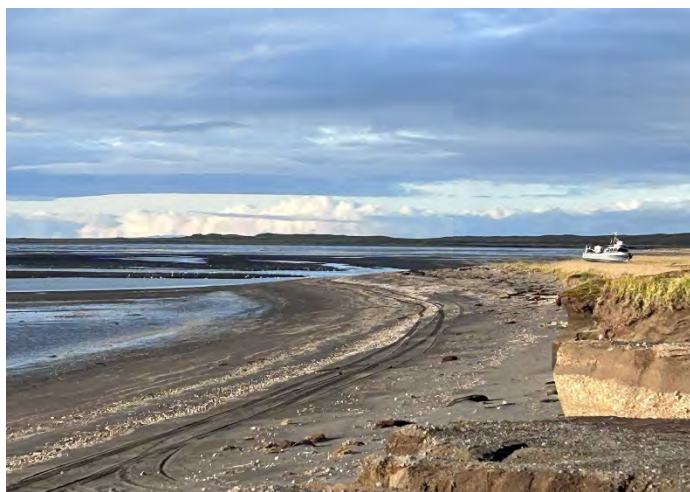
Service/Facility	Provider	Current Facilities	Issues, Notes, and Needs
<b>Pilot Point Facilities and Services</b>			
<b>Water / Wastewater</b>	City	60,000 gallon water tank. Septic pumping services and sewage lagoon.	
<b>Solid Waste</b>	Village Council	Class 3 permitted landfill	
<b>Communications</b>	Phone: ACS, AT&T, Alascom, GCI Internet: GCI		
<b>Electricity</b>	Pilot Point Electric Utility	Generator building with three generators (90kW, 100kW, 125kW)	
<b>Bulk Fuel</b>		City has a 128,900-gallon tank and LPSD has a 7,000-gallon tank for a total capacity of 135,900 gallons.	
<b>Public Safety</b>	State Trooper (King Salmon), VPSO BBNA + Village council employs VPSO		
<b>Fire and Emergency</b>	Clinic provides EMS		
<b>Medical</b>	Pilot Point Clinic: built in 2006, Village Council owns, BBAHC operates		
<b>School(s)</b>	LPSD School Building		
<b>Governance</b>	Native Village of Pilot Point Village Council and Village Office		
<b>Recreation</b>			
<b>Post Office</b>	US Post Office		



<b>Service/Facility</b>	<b>Provider</b>	<b>Current Facilities</b>	<b>Issues, Notes, and Needs</b>
<b>Other community facilities or services</b>			
<b>Roads and Bridges</b>			
<b>Trails</b>			
<b>Marine</b>	City runs bulkhead operations	One bulkhead	
<b>Aviation</b>	ADOT&PF	3,000-foot gravel runway	
<b>Public transport</b>			
<b>Other transportation-related resources</b>		City has multiple graders, dozers, and backhoes	
<b>Village Corporation</b>	Pilot Point Native Corporation		
<b>Freight carrier(s)</b>			
<b>Store(s)</b>			
<b>Other</b>			
<b>Housing (approximate no.)</b>			
<b>Hazard mitigation and/or climate plans</b>			
<b>Notable environmental hazards</b>			
<b>Other important land use notes</b>			

# Port Heiden

The Port Heiden community plan was developed through background research and community meetings and conversations with leadership members in 2024 and 2025. A list of sources can be found on page 99.



## Community Vision

Port Heiden is a self-sustaining community by living off natural resources (energy, food, etc.) that inspire controlled populations.

From Community Strategic Direction 2017-2022.

## Community Values

People, family, and community |  
Land and subsistence lifestyle |  
Seasons | Clean air | Quiet | Safe  
place to raise kids | Sober  
Community | Self-Sustainable

From 2024 community meeting notes.

## Community Trends: People, Schools, and Cost of Living



### Population

82 in 2023, down  
29% from 2013  
(104). ↓



### School

24 students enrolled  
(K-12) in academic  
year 2023-24, up 41%  
from 2013-14. ↑



### Cost of Living

- Unleaded gasoline: \$8.24/gallon in 2024.
- Aviation gas: \$13.43/gallon in 2024
- Commercial diesel: \$8.24/gallon in 2024.
- Construction diesel: \$8.99/gallon in 2025.
- Heating propane: \$2.50/lb + \$25 service fee in 2025.
- Electricity: In 2023, 100% of Port Heiden's electricity was produced by diesel generators, costing \$0.99/kWh – up from \$0.75 in 2012, without PCE. ↑



## Potential Community Priorities Over the Next Five Years

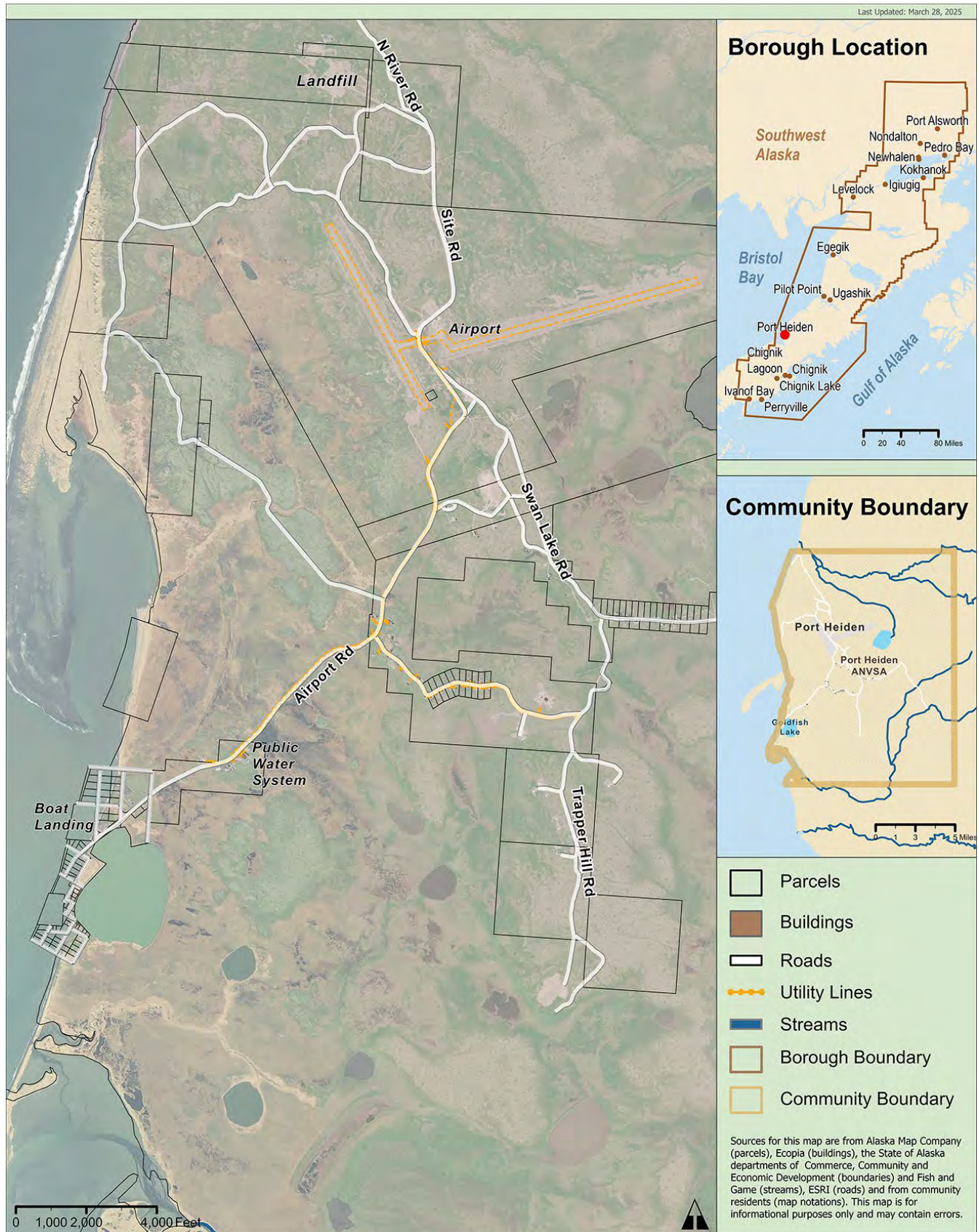
Sector	Priority
<b>Land Use and Environment</b>	<ul style="list-style-type: none"> <li>▪ <b>Protect fisheries and our land.</b></li> </ul>
<b>Housing</b>	<ul style="list-style-type: none"> <li>▪ <b>Develop more housing.</b></li> </ul>
<b>Community Facilities and Services</b>	<ul style="list-style-type: none"> <li>▪ <b>Explore the idea of a hub center. *</b></li> <li>▪ Upgrade the school foundation; consider school relocation.</li> <li>▪ Expand the greenhouse; switch to heavy duty dome style to withstand strong winds.</li> <li>▪ Build a swimming pool.</li> <li>▪ Build a courthouse.</li> </ul>
<b>Transportation</b>	<ul style="list-style-type: none"> <li>▪ <b>Develop a road to the Pacific side for barge accessibility.</b></li> </ul>
<b>Utilities</b>	<ul style="list-style-type: none"> <li>▪ <b>Implement a paid/pay-as-you-go fuel system. *</b></li> <li>▪ <b>Develop alternative energy sources, specifically river hydro and natural gas options. *</b></li> <li>▪ Reduce overall energy costs.</li> <li>▪ Upgrade fuel and trash trucks.</li> </ul>
<b>Economic Development</b>	<ul style="list-style-type: none"> <li>▪ <b>Explore gaining tax authority.</b></li> <li>▪ Develop a trail to Aniakchak.</li> </ul>
<b>Culture and Wellness</b>	<ul style="list-style-type: none"> <li>▪ <b>Acquire a new firetruck and an EMS Mobile Unit.</b></li> <li>▪ Build a wellness center with a gym.</li> </ul>

**Top priorities are bold.** \* Listed on 2025 Capital Improvement Project List (short- and long-term priorities).





# Map



## Community Infrastructure, Needs, and Resources

Service/Facility	Provider	Current Facilities	Issues, Notes, and Needs
<b>Port Heiden Facilities and Services</b>			
<b>Water / Wastewater</b>	City	Septic pumping services	
<b>Solid Waste</b>	City	Class 3 landfill	
<b>Communications</b>	Phone: ACS, GCI Internet: GCI, Starlink		
<b>Electricity</b>	Port Heiden Utilities (City of Port Heiden)	One generator (100kW) Wind study completed.	
<b>Bulk Fuel</b>	LPSD: 15,000-gallons City: 467,50- gallons Village Council: 55,000s AK DOT: 5,000 gallons Airport: 3,000 gallons Total capacity: 545,500 gallons		
<b>Public Safety</b>	State Trooper (King Salmon)	City holding cell	Holding cell needs repairs
<b>Fire and Emergency</b>		Fire Department, two trained firefighters, clinic and volunteers provide EMS Code Red Unit, Ambulance	
<b>Medical</b>	Port Heiden Clinic BBAHC		
<b>School(s)</b>	LPSD School Building		
<b>Governance</b>	Native Village of Port Heiden Village Council and Village Office (in Community building)		
<b>Recreation</b>			
<b>Post Office</b>	US Post Office		

<b>Service/Facility</b>	<b>Provider</b>	<b>Current Facilities</b>	<b>Issues, Notes, and Needs</b>
<b>Other community facilities or services</b>		Native Village of Port Heiden Community building	
<b>Roads and Bridges</b>		26 miles of roads, majority owned by City of Port Heiden. One bridge owned by the Native Council of Port Heiden.	
<b>Trails</b>		At least 10 miles of trails.	
<b>Marine</b>		Natural boat harbor, no dock. Boat haul out and marine storage available.	
<b>Aviation</b>	ADOT/PF	5,000 and a 4,000-foot crosswind lighted gravel runway.	
<b>Public transport</b>			
<b>Other transportation-related resources</b>		City has Multiple dozers, backhoes, grader, and loader.	
<b>Village Corporation</b>	Alaska Peninsula Corporation		
<b>Freight carrier(s)</b>	Grant Aviation, Lake Clark Air		
<b>Store(s)</b>			
<b>Other</b>	Bering Sea Vibes, Christensen & Sons, Carol's Legacy Lodge, Scott Anderson Rentals		
<b>Housing (approximate number)</b>		39 houses in use, 4 vacant, 5 teacher housing.	



<b>Service/Facility</b>	<b>Provider</b>	<b>Current Facilities</b>	<b>Issues, Notes, and Needs</b>
<b>Hazard mitigation and/or climate plans</b>			
<b>Notable environmental hazards</b>			Erosion
<b>Other important land use notes</b>			

# Ugashik

The Ugashik community plan was developed through background research and community meetings and conversations with leadership members in 2024 and 2025. A list of sources can be found on page 99.



## Community Vision

We are responsible for our own future. Together we thrive year-round through self-governance, local jobs and youth involvement.

From Community Strategic Direction 2017-2022.

## Community Values

Fish | Very clean village | Quiet life – serene, peaceful, beautiful | Great hunting and trapping | Wildness | It's home | Commitment to keeping the community alive

From 2024 community meeting notes.

## Community Trends: People, Schools, and Cost of Living



### Population

4 in 2023, down from 9 in 2013. ↓

In 2024, there were 6 year-round residents and ~55 in the summer.



### School

There is no school.



### Cost of Living

- Unleaded gasoline: \$5.25/gallon in 2023-24.
- Heating propane: \$5.25/gallon in 2024.
- Electricity: Ugashik has no electric utility.

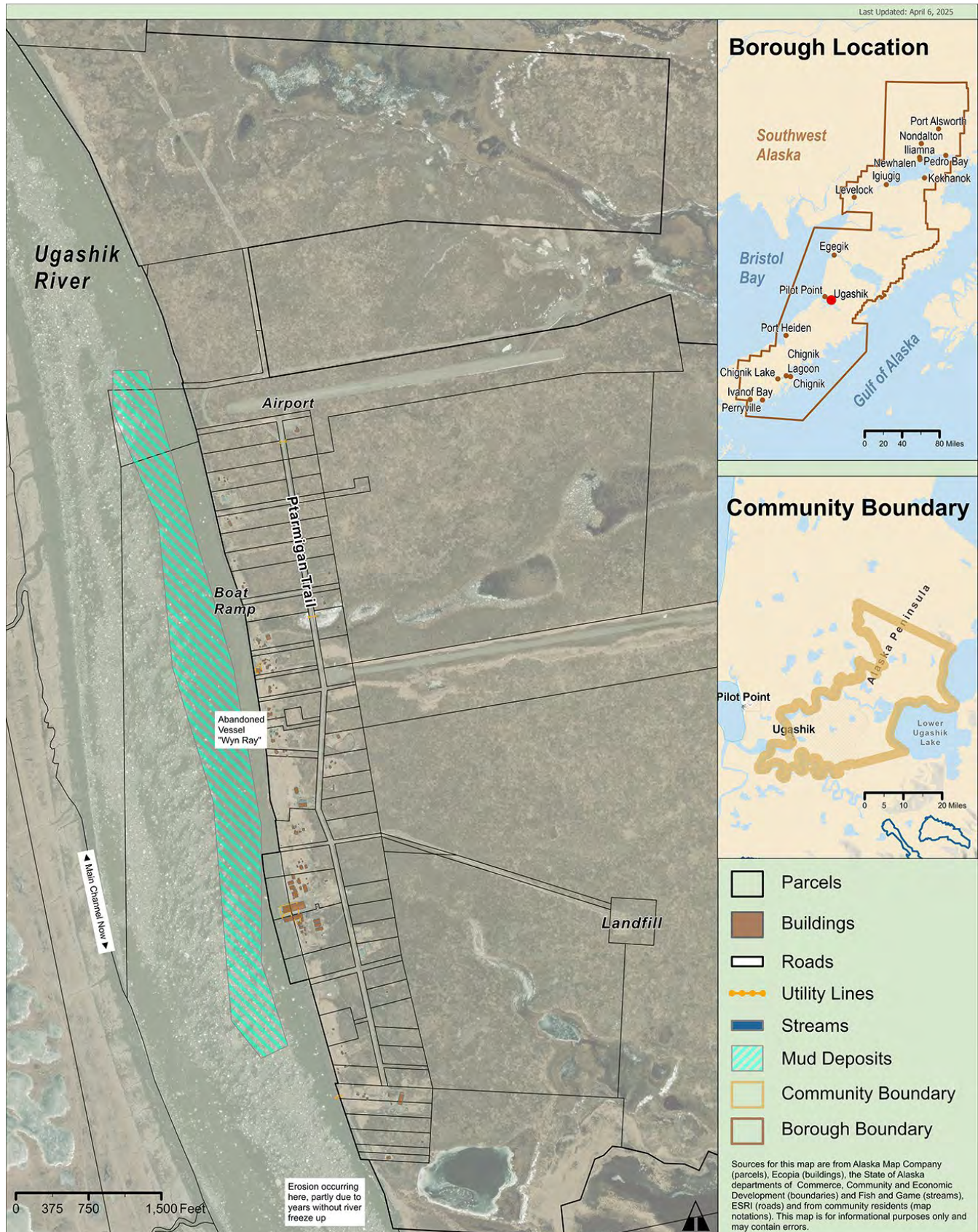
## Potential Community Priorities Over the Next Five Years

Sector	Priority
<b>Land Use and Environment</b>	<ul style="list-style-type: none"> <li>▪ <b>Remove the Win-Ray, an abandoned ship in the river.</b></li> </ul>
<b>Housing</b>	<ul style="list-style-type: none"> <li>▪ <b>Improve existing housing.</b> *</li> <li>▪ Sell land to younger families and build housing.</li> </ul>
<b>Community Facilities and Services</b>	
<b>Transportation</b>	<ul style="list-style-type: none"> <li>▪ <b>Improve roads.</b></li> <li>▪ <b>Resurface airport.</b></li> <li>▪ <b>Improve the barge landing.</b></li> <li>▪ Enhance equipment maintenance options, like a rotating or shared mechanic among neighboring communities.</li> </ul>
<b>Utilities</b>	<ul style="list-style-type: none"> <li>▪ <b>Upgrade village energy systems.</b> *</li> <li>▪ Continue septic improvements.</li> </ul>
<b>Economic Development</b>	<ul style="list-style-type: none"> <li>▪ <b>Keep fishing alive.</b></li> <li>▪ <b>Keep the tender service.</b></li> <li>▪ <b>Create jobs by exploring some of the following ideas:</b> <ul style="list-style-type: none"> <li>○ Selling fuel to aircraft operators</li> <li>○ Tourism opportunities and related infrastructure</li> <li>○ Alternative power sources</li> <li>○ Selling gravel</li> </ul> </li> </ul>
<b>Culture and Wellness</b>	

**Top priorities are bold.** \* Listed on 2025 Capital Improvement Project List (short- and long-term priorities).



# Map



## Community Infrastructure, Needs, and Resources

Service/Facility	Provider	Current Facilities	Issues, Notes, and Needs
<b>Ugashik Facilities and Services</b>			
<b>Water / Wastewater</b>	All private wells (a few owned by Ugashik Traditional Council (UTV.))	Eleven new wells were dug for the existing active homes and the Community Center.	
<b>Solid Waste</b>	UTV	Landfill and incinerator	
<b>Communications</b>	UTV has Starlink at the community center for public use. Some residents have their own satellite internet.	Mostly cell phones	
<b>Electricity</b>	UTV provided hybrid-electrical systems to most residences and buildings (combined solar power/battery backup/some wind powered batteries. Some diesel backup.)	Each home and powered building has their own generator.	
<b>Bulk Fuel</b>	UTV sells fuel.	In the final phases of completing the Bulk Fuel Tank facility.	
<b>Public Safety</b>			
<b>Fire and Emergency</b>	During summer UTV brings in seasonal EMT to village (in partnership with BBNA.)	New tanker fire truck purchased a few years ago.	
<b>Medical</b>	See above		
<b>School(s)</b>	LPSD School Building closed in 2023		
<b>Governance</b>	Ugashik Traditional Village Tribal Council (UTV)		
<b>Recreation</b>			
<b>Post Office</b>	Mail arrives via plane. UTV employee picks up and distributes mail.	There is a mail storage shed at the airport.	

Service/Facility	Provider	Current Facilities	Issues, Notes, and Needs
<b>Other community facilities or services</b>	UTV	Community center with a shower, laundry, and cooking facilities. There is a guest room and two offices in the building. Attached garage with freezers that residents can use to cut down power use at home.  Old cannery building houses icehouse and some space for subsistence use for fish processing, net and boat storage.	Looking to do a major upgrade for the community center in 2025.
<b>Ugashik Transportation</b>			
<b>Roads and Bridges</b>	UTV maintains roads.		Needs maintenance.
<b>Trails</b>	No formally documented trails.		
<b>Marine</b>	New dock was constructed in 2015-2018. Barge landing is functional.		
<b>Aviation</b>	UTV currently maintains the airstrip for chartered services.	ADOT&PF-owned airport: gravel 3,100- x 61-foot runway Brigg's Airstrip	
<b>Public transport</b>	None		
<b>Other transportation-related resources</b>			
<b>Ugashik Economic Development</b>			
<b>Village Corporation</b>	Ugashik Traditional Village Council		
<b>Freight carrier(s)</b>	Lake Clark Air, Grant Aviation		
<b>Store(s)</b>	None		
<b>Other</b>			
<b>Ugashik Land Use</b>			



Service/Facility	Provider	Current Facilities	Issues, Notes, and Needs
<b>Housing (approximate no.)</b>		There are 11 active homes in the village. Four are inhabited year-round. The remaining are active during the summer fishing season.	
<b>Hazard mitigation and/or climate plans</b>		Currently working with Bristol Environmental Services on drafting a new Hazard Mitigation Plan.	
<b>Notable environmental hazards</b>		Old collapsed dock (on private property).	There has been a rise in the level of mud on the eastern shore of the lake – it has impacted the set net holders. Abandoned vessel in the river (Win Ray).

## Pacific Subregion

The Pacific Subregion of Alaska's Lake and Peninsula Borough includes the communities of **Chignik Bay, Chignik Lagoon, Chignik Lake, and Perryville**. Nestled along the southern coast of the Alaska Peninsula, these villages are surrounded by coastal fjords, volcanic mountains, and rich marine ecosystems. The area is shaped by the Chignik River system and lies near significant federal landmarks, including the Alaska Peninsula National Wildlife Refuge and Aniakchak National Monument and Preserve. Commercial salmon fishing is the cornerstone of the regional economy, especially in Chignik Bay, which serves as a hub for fishing and seafood processing. Seasonal influxes of fishermen and cannery workers significantly increase the population during the summer months. Chignik Lagoon and Chignik Lake also rely heavily on fishing, both for income and subsistence, with many residents participating in commercial fisheries or working in processing facilities. Perryville, established by survivors of the 1912 Katmai eruption, continues to uphold a subsistence lifestyle, with commercial fishing providing essential income. Across the subregion, public sector employment in schools, Tribal governments, and utilities offers year-round jobs.

### Common Themes Discussed at 2024 Community Meetings in the Pacific Subregion

#### Communication

The regional communities want to develop better communication systems. With the Aleutians Fiber Project, GCI brought 2.5 gig internet speeds to Chignik Bay in 2025, with extension to Chignik Lake, Chignik Lagoon and Perryville in Phase II.

#### Inter-community cooperation

The communities strive for greater collaboration between villages in shared projects, such as building a cannery, improving infrastructure, reducing transportation and freight costs, and being involved in sustainable fisheries management.

#### Transportation

The cuts to ferry service are challenging.

#### Food security

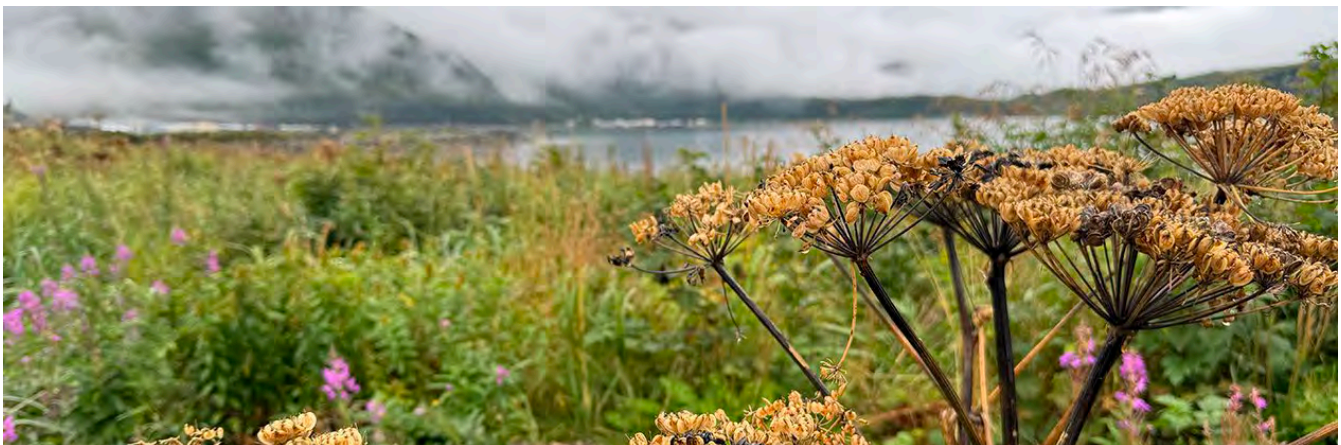
The regional communities want to pursue greenhouses and other local food production initiatives to help reduce food costs.

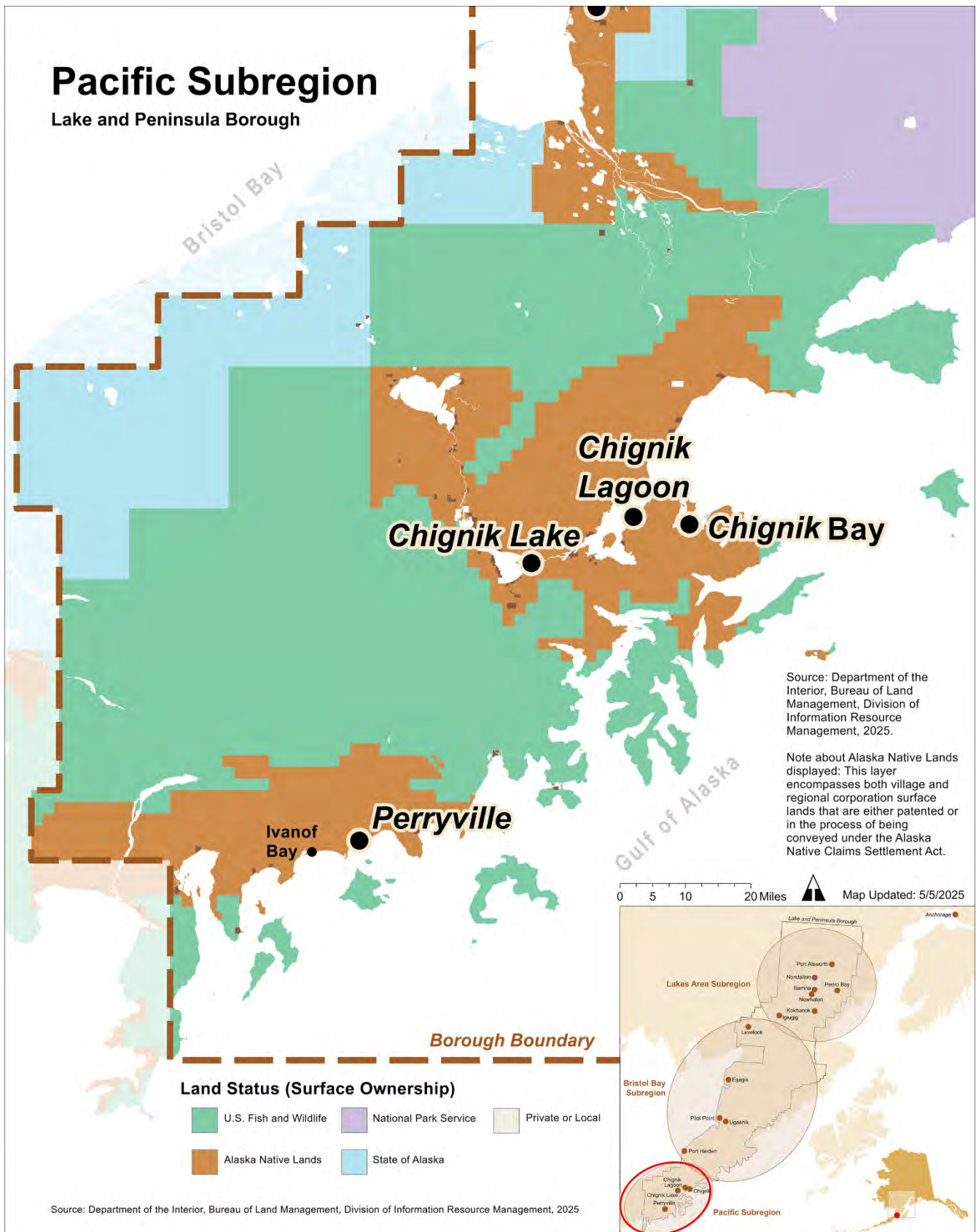
#### Population decline

The decrease in population after economic downturns like the fishery disasters impacting the regional economy, education systems, and community vitality.

#### Emergency services

The regional communities want improvements in emergency response services, including fire suppression equipment.







# Chignik Bay

The Chignik Bay community plan was developed through background research and community meetings and conversations with leadership members in 2024 and 2025. A list of sources can be found on page 99.



## Community Vision

Chignik Bay is a united community with increased opportunities to diversify revenue, offset the high cost of living, and grow local leadership.

From Community Strategic Direction 2017-2022.

## Community Values

Family | Nature and surroundings | It's clean, safe, and quiet | Berry picking | The school | Ocean resources and seafood | Interesting and rich history

From 2024 community meeting notes.

## Community Trends: People, Schools, and Cost of Living



### Population

56 in 2023, down 37% from 2013. ↓

*A population increase to 66 is forecasted for FY2026 by the State.*



### School

Closed in 2020



### Cost of Living

- Unleaded gasoline: \$4.66/gallon as of 1-30-2025.
- Heating fuel number 1: \$4.60/gallon as of 1-30-2025.
- Heating fuel number 2: \$4.37/gallon as of 1-30-2025.
- Electricity: In 2023, 100% of Chignik Bay's electricity was produced by diesel generators, costing \$0.64/kWh – up from \$0.51 in 2012, without PCE. ↑

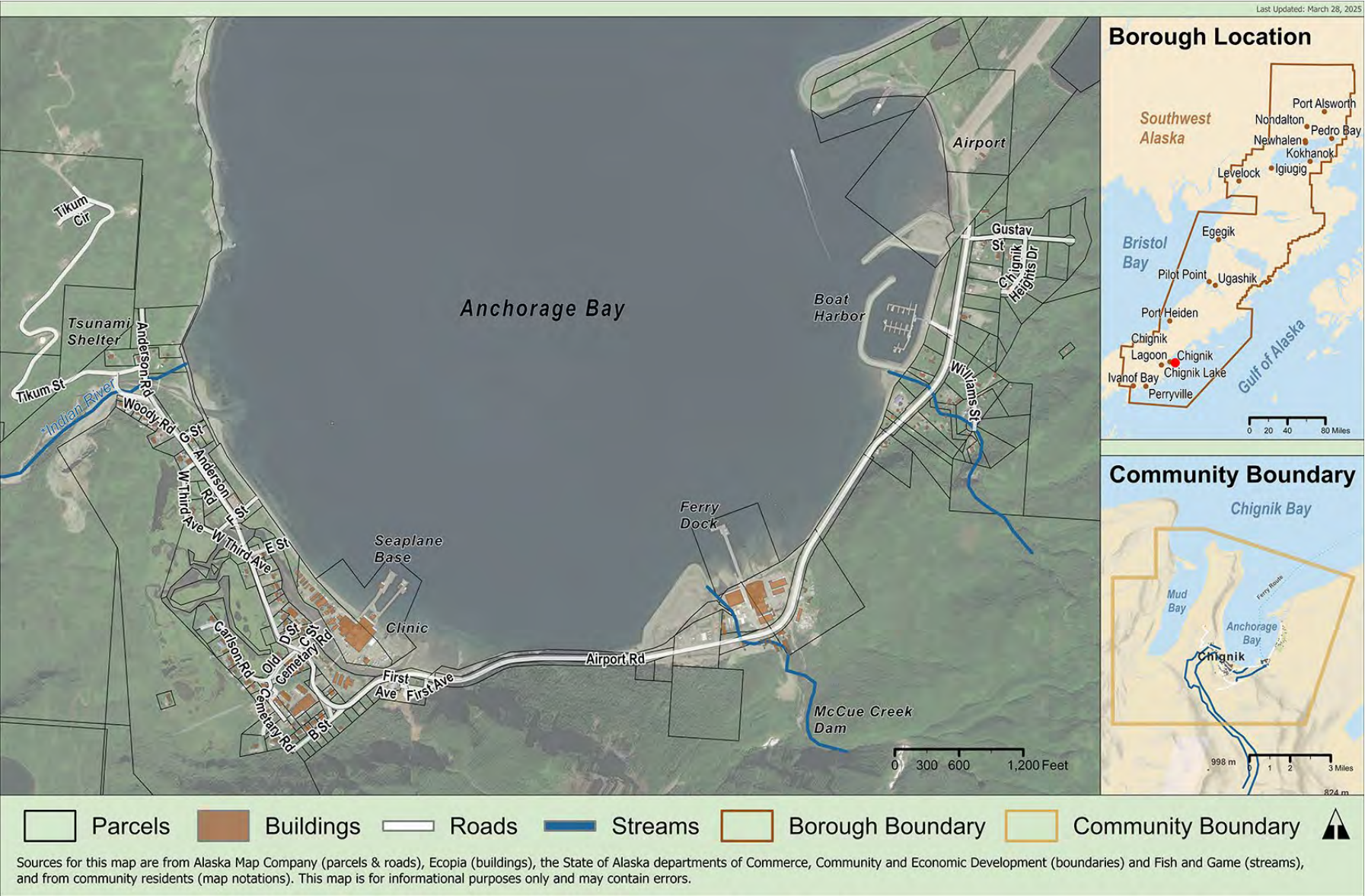


## Potential Community Priorities Over the Next Five Years

Sector	Priority
<b>Land Use and Environment</b>	<ul style="list-style-type: none"> <li>▪ <b>Address invasives and continue to remove excess alder.</b></li> <li>▪ <b>Address coastal bank erosion threatening the clinic.</b></li> <li>▪ Develop a boardwalk and trail(s) in Berry Flats for visitors.</li> </ul>
<b>Community Facilities and Services</b>	<ul style="list-style-type: none"> <li>▪ <b>Repair Public Works Equipment. *</b></li> <li>▪ <b>Reopen the school.</b></li> <li>▪ <b>Plan and implement shoreside property development, *</b> aiming to make facility improvements (e.g., processing plant, cannery) and lease to fish processor(s) in future.</li> <li>▪ <b>Complete Shoreside Electrical Upgrades. *</b></li> <li>▪ Implement a program to prevent bears from getting into dumpsters and trash bins.</li> <li>▪ Create a space for recording and displaying history and artifacts.</li> </ul>
<b>Transportation</b>	<ul style="list-style-type: none"> <li>▪ <b>Address poor winter service</b> (i.e., no ferry service, airport closures).</li> <li>▪ Reduce contaminants from road dust by resurfacing roads, enforcing slower speed limits, and/or purchasing a water truck.</li> </ul>
<b>Utilities</b>	<ul style="list-style-type: none"> <li>▪ <b>Pursue options for less expensive energy and internet service.</b> <ul style="list-style-type: none"> <li>○ Explore hydropower options to help bring fuel costs down.</li> <li>○ Complete the hydro-dam and access road. *</li> </ul> </li> <li>▪ <b>Upgrade the water distribution system.</b></li> <li>▪ Complete community sanitation infrastructure projects in Chignik Bay to repair station #5 controls, complete the access trail to the reservoir, and other related improvements.</li> <li>▪ Transport and install new incinerator at the landfill.</li> <li>▪ Complete airport improvements and lighting. *</li> </ul>
<b>Economic Development</b>	<ul style="list-style-type: none"> <li>▪ <b>Create year-round jobs and new revenue sources to offset cannery closure.</b></li> <li>▪ <b>Complete a tourism development plan. *</b></li> <li>▪ <b>Develop infrastructure to support tourism,</b> e.g., vendor support, visitor centers with public restrooms for boat crews, cruise ship passengers, etc.</li> <li>▪ Find a processor and establish partnerships for winter fishing opportunities (i.e., crab, halibut, clams, salmon).</li> <li>▪ Explore recruiting computer technology companies to the community.</li> </ul>
<b>Culture and Wellness</b>	<ul style="list-style-type: none"> <li>▪ <b>Develop more programs and activities for young people and the entire community.</b></li> <li>▪ Acquire firefighting equipment and create a volunteer fire fighting program in Chignik Bay.</li> <li>▪ Work with the state to position a Village Public Safety Officer in Chignik Bay at least seasonally.</li> <li>▪ <b>Develop stronger relationships with Borough and State representatives.</b></li> <li>▪ Re-establish a Volunteer Fire Department and First Responders Team.</li> </ul>

**Top priorities are bold.** \* Listed on 2025 Capital Improvement Project List (short- and long-term priorities).

Map





## Community Infrastructure, Needs, and Resources

Service/Facility	Provider	Current Facilities	Issues, Notes, and Needs
<b>Chignik Bay Facilities and Services</b>			
<b>Water / Wastewater</b>	City of Chignik	Upper Indian Lake for water; storage tank and pump house. All have piped water.	Upgrades are needed (Chignik Dam and Transmission Line Project) to the water distribution system. Some people on private septic; others on piped sewer system.
<b>Solid Waste</b>	City of Chignik	Class 3 unpermitted landfill and city dumpsters.	The Tribal Council bought a burn box but needs sight development. Sorting facility needed for hazardous waste. Bear proof dumpsters needed. Watching for contamination in legacy dumpsites.
<b>Communications</b>	Phone: ACS, AT&T, GCI Internet: GCI, Hughes Net, majority of people use Starlink. Cable: City of Chignik	GCI Earth Station and Fiber Cable Landing Site.	
<b>Electricity</b>	City of Chignik	Chignik Electric City Generator Building: Large power plant to accommodate the three generators.	Tribe purchased a new generator in 2021. A J-box is located near the bluff and needs to be relocated because of avalanche hazard. Electrical upgrades planned (Chignik Bay Hydro Project and Comprehensive Electrical distribution and facilities upgrades). Electricity to the new City dock for lighting (partially funded in 2025) and for dock improvements.
<b>Bulk Fuel</b>	City of Chignik	43,000 gallons Shoreside Property (City): 191,500 gallons Power Plant (City): 5,000 gallons LPSD: 5,400 gallons ( <i>school closed but tanks are still in place</i> ) Total Capacity: 244,900 gallons	Fuel Storage System Repair and Tank Cleaning needed.

Service/Facility	Provider	Current Facilities	Issues, Notes, and Needs
<b>Public Safety</b>	State Trooper (King Salmon)	VPSO Equipment Owned by BBNA: 2013 Ford Explorer, 2014 18' Lund skiff, outboard, and trailer	VPSO Office is no longer usable without major repairs. Need VPSO housing.
<b>Fire and Emergency</b>	City of Chignik, BBAHC	Ambulance is owned by Chignik Village Council, 1 ambulance owned by City of Chignik  Chignik Bay Tribal Council purchased a customized ATV with Emergency Fire Suppression Response and Dust Control for the roads-arriving in June 2025.	Chignik Bay Fire and Rescue-Volunteer Fire Department and 1 <sup>st</sup> Responders Team must be re-established, Clinic Provides EMS.
<b>Medical</b>	Chignik Bay Tribal council owns the Harris Sub-regional clinic which serves all communities in the Chignik Subregion. BBAHC operates (sub-regional center) Chignik Bay Sub Regional Health Clinic. Concerns about erosion in front of the clinic and availability of trained staff.	Clinic, Ambulance	Concerns about erosion in front of the clinic and availability of trained staff.
<b>School(s)</b>	LPSD School Building, school closed in 2020.	School with 6 classrooms, gym, shop, kitchen, library. Additionally teacher housing, playground, backup generator, fuel tanks, and RAV4 vehicle.	Desire to repurpose the building so it stays maintained. School building/gym and teacher housing is deteriorating because of lack of maintenance and no heat in the buildings. Tribe looking into re-purposing the buildings for Charter School, conferences, future research center, and lodging for health care workers and others who visit to provide services to community residents.
<b>Governance</b>	Chignik Bay Tribal Council: Village Council and Village Council Office City of Chignik: City Council and City Hall Building	Tribal Office and City Office.	

Service/Facility	Provider	Current Facilities	Issues, Notes, and Needs
<b>Recreation</b>	City of Chignik	Community Hall. School playground used in summer. Boat harbor/boat launch for recreational boating.	Community Hall was awarded a Grant to implement energy efficiency improvements. Savings can be used to increase recreation activities in near future.
<b>Post Office</b>	US Post Office	Post Office	
<b>Chignik Bay Transportation</b>			
<b>Roads and Bridges</b>	AKDOT City of Chignik Chignik Bay Tribal Council	Roads: 3-4 miles of road, most locally owned. Main road partially owned by the State; needs to be resurfaced. Brush cutting the alder along roads for safety. Spray roads when dusty. Snow clearing on main roads.  Bridges: Four owned by the City	Bridges are aging and have erosion issues. Alternatives are being developed for erosion control/rehabilitation/and or replacement.  Landfill road improvements in the planning stage, and alternatives are being developed.
<b>Trails</b>		Traditional use trails throughout the community on State, Far West Inc., and City land.	Community desires to better establish and maintain traditional use trails. Mapping trails has started, but is not complete.
<b>Marine</b>	City of Chignik: harbor, barge landing/skiff launch, two wood-pile-driven docks equipped for fuel transfer. Lake and Peninsula Borough: Sheet Pile Dock UAF: Spotter Wave Buoy <a href="https://spotters.sofaroccean.com/?spotter-filter=SPOT-31625C">https://spotters.sofaroccean.com/?spotter-filter=SPOT-31625C</a>	City of Chignik Small Boat Harbor Sheet pile dock: owned by Borough; managed by City. Alaska State Ferry, Cruise ships, Research vessels, Fishing boats, tenders, processors, and freighters, stops at this dock.  City-owned barge landing.  Shoreside property includes two City-owned wood-pile-driven docks that need assessment and repair. Equipped for fuel transfer.	City wood-pile-driven docks need inspections and comprehensive repairs.  UAF has deployed a scientific buoy that collects data such as wave height and direction, wind speed, temperature, and surface conditions to inform the boating public via website or app.
<b>Aviation</b>	ADOT&PF FAA: AWOS	Airstrip (2,600 feet long) and Alaska DOT equipment building.  AWOS- Automated Weather Observation Station	The State is planning to resurface the airstrip. State equipment is not in working order for grading runway and state road.



Service/Facility	Provider	Current Facilities	Issues, Notes, and Needs
<b>Public transport</b>	N/A		
<b>Other transportation-related resources</b>	City of Chignik	City of Chignik Maintenance Building. Old gym (Quonset hut) is the City shop now.  Shoreside property also has a machine shop and large warehouses.	Heavy equipment. Maintenance and repair has been challenging because it's so expensive.
<b>Chignik Bay Economic Development</b>			
<b>Village Corporation</b>	Far West Corporation	Main office building containing two one-bedroom apartments, three office spaces, and laundry. Efficiency apartment and shop. Additional storage buildings.	
<b>Freight carrier(s)</b>	Coastal Transportation Lake Clark Air Grant Aviation	Lake Clark Air, air charters, Grant Aviation.  Coastal Transportation (out of Seattle), barge charter	
<b>Store(s)</b>	City of Chignik	Community Hall offers snacks, drinks, pantry staples, and household supplies.	Planning to lease a Shoreline Property building to a commercial store operator.
<b>Other transportation-related resources</b>	City of Chignik Far West Inc.	The City and Far West Inc. offer short-term vehicle rentals	
<b>Chignik Bay Land Use</b>			
<b>Housing (approximate no.)</b>	Chignik has approximately 80 homes, of which around 50 are currently habitable. Many of these are not occupied year-round, and a significant number will require upgrades soon to remain livable. Newer housing includes apartments (redeveloped from old school property) and newer HUD homes.	N/A	

Service/Facility	Provider	Current Facilities	Issues, Notes, and Needs
<b>Hazard mitigation and/or climate plans</b>	<a href="#">Chignik Subregional Watershed Plan</a> ) <a href="#">Chignik Bay Tribal Hazard Mitigation Plan</a> (Updated in 2024) <a href="#">Chignik Bay Climate Resiliency Action Plan</a> (2023)	Erosion monitoring equipment installed by UAF	
<b>Notable environmental hazards</b>	N/A	N/A	<p>Erosion near clinic. Flooding – had to fix culverts in the creek. Avalanche. Extreme winds. Tsunami evacuation route – need another shelter on other side of water storage. Legacy contamination from historical canneries. Large pile of contaminated debris left behind by Trident contractors.</p>
<b>Other important land use notes</b>	N/A	N/A	<p>BBNC Rock Quarry: caused erosion, widened the creek and may affect nearby homes. The creek is moving back toward the road. Now use local gravel for roads. There was a rock crusher near the electric powerhouse for gravel.</p> <p>Abandoned fishing boats.</p> <p>Opportunity to designate historical buildings and places.</p>

# Chignik Lagoon

The Chignik Lagoon community plan was developed through background research and community meetings and conversations with leadership members in 2024 and 2025. A list of sources can be found on page 99.



## Community Vision

Secure strategic partnerships to progress in building the needed infrastructure that will significantly improve and off-set the high cost of living for our community.

From Community Strategic Direction 2017-2022.

## Community Values

Quiet, safe, tight-knit community  
| Constantly changing weather |  
Subsistence lifestyle | Family

From 2024 community meeting notes.

## Community Trends: People, Schools, and Cost of Living



### Population

73 in 2023, down  
1% from 2013. ↓



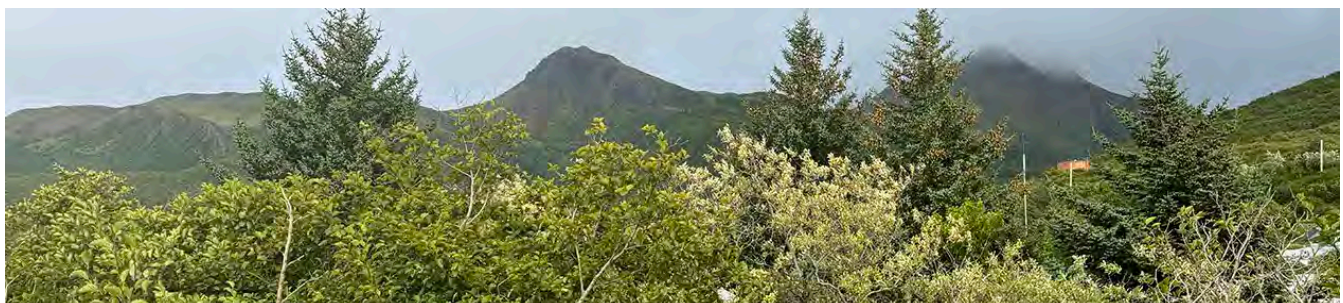
### School

17 students  
enrolled (K-12) in  
academic year  
2023-24, up 55%  
from 2013-14. ↑



### Cost of Living

- Unleaded gasoline: \$6.98/gallon in 2023.
- Jet A fuel: \$8.92/gallon in 2023.
- Heating fuel #1: \$5.36/gallon in 2023.
- Electricity: In 2023, 69% of Chignik Lagoon's electricity was produced by diesel generators and 31% from an in-river hydroelectric plant on Packers Creek, costing \$0.90/kWh, up from \$.075 in 2012, without PCE. ↑



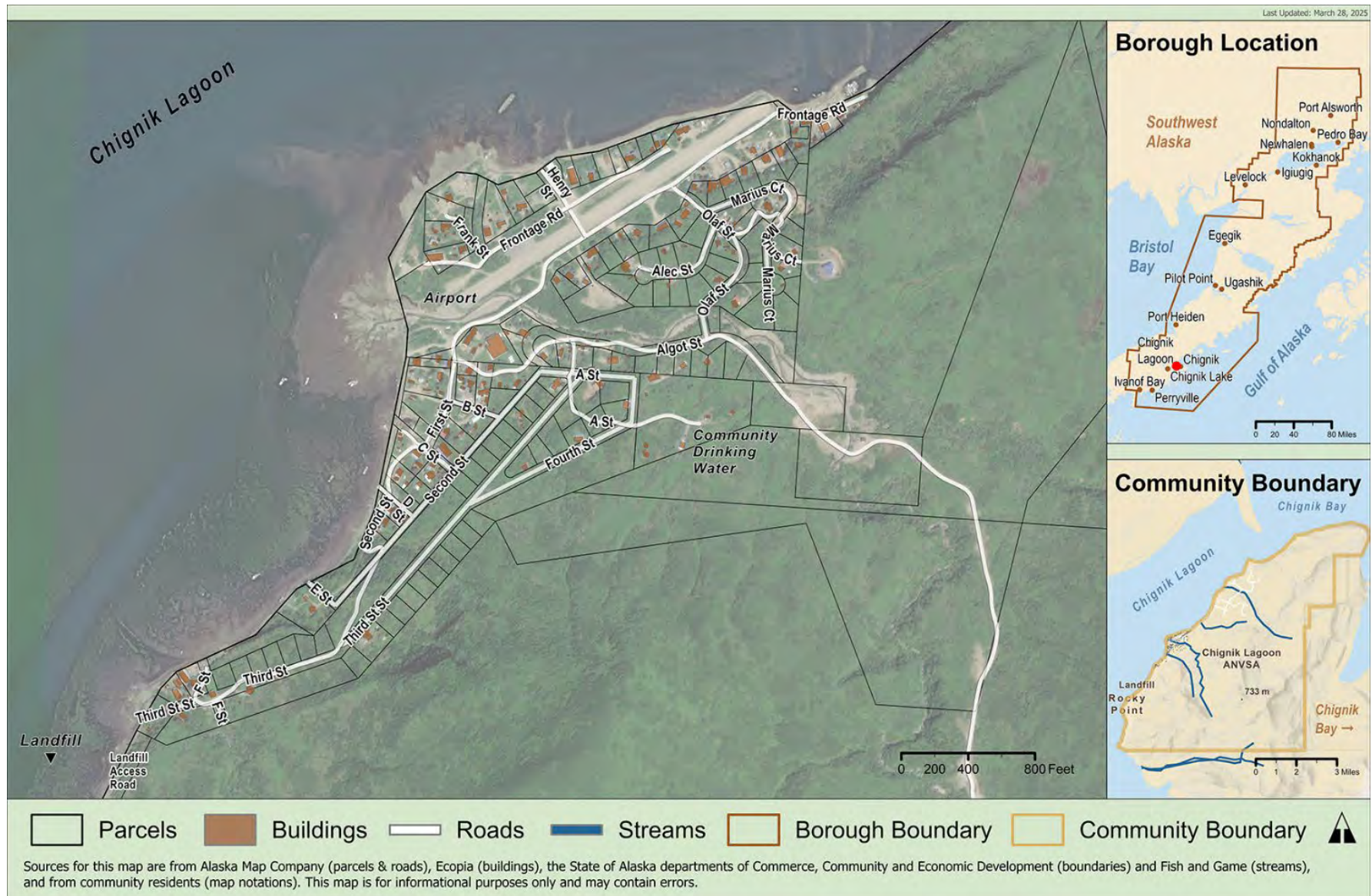


# Potential Community Priorities Over the Next Five Years

Sector	Priority
<b>Land Use and Environment</b>	<ul style="list-style-type: none"> <li>▪ <b>Resurvey roads and check easements.</b></li> <li>▪ <b>Address erosion along the beach.</b></li> <li>▪ Complete land conservation easement across the Lagoon with the Army Corps of Engineers.</li> <li>▪ Address the abandoned barge next to the beach, including lead testing and eventual removal.</li> <li>▪ Initiate water quality monitoring to identify issues with leaking sewage and contamination, especially around the landfill and in the lagoon.</li> </ul>
<b>Housing</b>	<ul style="list-style-type: none"> <li>▪ <b>Increase available housing for residents, including new build and/or rehabilitation of aging or abandoned housing stock.</b></li> <li>▪ Designate or construct housing for guests and/or contractors.</li> </ul>
<b>Community Facilities and Services</b>	<ul style="list-style-type: none"> <li>• <b>Repair the incinerator at the landfill.</b></li> <li>• Construct an emergency shelter. *</li> <li>• Purchase a fire suppression wagon. *</li> <li>• Construct a multi-purpose clinic/garage/hangar/apartment building.</li> </ul>
<b>Transportation</b>	<ul style="list-style-type: none"> <li>▪ <b>Continue to explore an Intertie Road to connect Chignik Bay, Chignik Lake, and Chignik Lagoon</b></li> <li>▪ <b>Construct a new Landfill Road towards Chignik Lake *</b></li> <li>▪ <b>Explore long-term options to reroute the runway so it is not routed through the center of town</b></li> <li>▪ <b>Reroute the water treatment plant access road to a less steep alternative, as documented in the Chignik Lagoon Long Range Transportation Plan.</b></li> <li>▪ Resurface the airport runway. *</li> <li>▪ Implement an inter-village ferry/barge. *</li> </ul>
<b>Utilities</b>	<ul style="list-style-type: none"> <li>▪ <b>Lower energy costs with renewable energy</b> (e.g., solar, geothermal) and explore harnessing coal methane. * <ul style="list-style-type: none"> <li>○ Purchase and install batteries to smooth the transition between renewables and diesel generators.</li> <li>○ Upgrade the existing aging diesel plant and village energy grid.</li> <li>○ Prepare a strategic energy plan for the community.</li> </ul> </li> <li>▪ Complete improvements to the water well(s) and distribution system. *</li> <li>▪ Address problems with sewage line and lift station.</li> </ul>
<b>Economic Development</b>	<ul style="list-style-type: none"> <li>▪ <b>Develop more collaboration among Chignik Bay, Chignik Lake and Chignik Lagoon (e.g., freight, service providers).</b></li> <li>▪ Explore and develop action plan for potential gravel source(s). *</li> </ul>
<b>Culture and Wellness</b>	<ul style="list-style-type: none"> <li>▪ <b>Increase food security with purchase of a community greenhouse and bulk-purchase of supplemental foods (see also Native Village of Chignik Lagoon Community Development Strategic Plan).</b></li> <li>• Consider a seasonal Village Public Safety Officer or shared law enforcement officer with the other Chigniks.</li> </ul>

**Top priorities are bold.** \* Listed on 2025 Capital Improvement Project List (short- and long-term priorities).

# Map



## Community Infrastructure, Needs, and Resources

Service/Facility	Provider	Current Facilities	Provider, Current Facilities, Issues, and Needs
<b>Chignik Lagoon Facilities and Services</b>			
<b>Water / Wastewater</b>			
<b>Solid Waste</b>	Village Council	Class 3 unpermitted landfill and incinerator	Creating a staging area for trash: auxiliary dumpsters moving to pad with fencing (next to the BBHA low-income housing) because the landfill is hard to get to. The landfill is next to a wetlands; also see comment about building a new landfill access road.
<b>Communications</b>	Phone: ACS, AT&T, Alascom, GCI Internet: GCI, Starlink		Clinic has a GCI dish; Health Aide has poor internet and the phones go out a lot.
<b>Electricity</b>		Chignik Lagoon Power Utility has three diesel electric generators (148kW, 160kW, 145kW)	Hydro Plant (as of 2015) School and village generators are in the same building. Updating bulk fuel tanks and equipment. Have 'fuel cubes' to deliver to people who live too far uphill for the tanker trucks to reach. Tribe wanted to replace a diesel generator, but they are difficult to obtain right now because of the focus on renewable energy, so they are rehabbing the existing one.
<b>Bulk Fuel</b>		LPSD: 30,000 gallons Village Council: 75,000 gallons Village Electric: 1,500 gallons Village Incinerator: 2,000 gallons Village Council, Old Clinic: 3,000 gallons Private: 24,650 gallons Total capacity: 136,150 gallons	



<b>Service/Facility</b>	<b>Provider</b>	<b>Current Facilities</b>	<b>Provider, Current Facilities, Issues, and Needs</b>
<b>Public Safety</b>	State Trooper (King Salmon)		
<b>Fire and Emergency</b>	Clinic provides EMS Code Red Unit Chignik Lagoon Rescue Squad		
<b>Medical</b>	Health Clinic Village Council owns; BBAHC operates Chignik Lagoon Clinic, southern EMS Region		
<b>School(s)</b>	LPSD School Building		
<b>Governance</b>	Native Village of Chignik Lagoon Village Council and IRA Office		
<b>Recreation</b>	Playground		
<b>Post Office</b>	US Post Office		
<b>Other community facilities or services</b>			
<b>Roads and Bridges</b>	Two Bridges, several gravel roads. Road to the landfill is basically driving on the beach when the tide is out.		Steep roads: hoping to retire some of them (e.g., the road to the water plant is not always open in the winter; the operator has to walk to the water plant). Electric panel in the water plant has issues. Well is not producing enough. Looking for funding to investigate a new water source.  Building a new road to the landfill could be a steppingstone toward an intertie road among the Chigniks. The landfill has time, but planning to create a gravel pit above the landfill for road (use gravel for road construction) and move the landfill to the gravel pit after road construction is done and no more gravel is being extracted.
<b>Trails</b>			

<b>Service/Facility</b>	<b>Provider</b>	<b>Current Facilities</b>	<b>Provider, Current Facilities, Issues, and Needs</b>
<b>Marine</b>			
<b>Aviation</b>	ADOT&PF	State-owned airstrip 2,200 ft long;	The airstrip runs through the center of town and therefore sees extensive vehicle cross-traffic, which is considered a safety concern; DOT&PF and the village both own graders
<b>Other transportation-related resources</b>		Village and private Bobcat, front-end loader, skid-steer, dozer, utility truck, two dump trucks.	
<b>Village Corporation</b>	Chignik Lagoon Native Corporation		
<b>Store(s)</b>			Tribe is doing greenhouses, gardening for food security. Supplementing, not replacing food.
<b>Housing (approximate no.)</b>			
<b>Hazard mitigation and/or climate plans</b>			
<b>Notable environmental hazards</b>			Erosion on road past hydro plant to hydro intake. Community has lower risk from tsunamis because of the lagoon but have an active volcano. Would like to address or remove the abandoned barge on the beach, including testing it for lead contamination.
<b>Other important land use notes</b>			Snowplow not working City shop is the tsunami shelter. Has emergency supplies. Want to get funding to install a toilet in it.

# Chignik Lake

The Chignik Lake community plan was developed through background research and community meetings and conversations with leadership members in 2024 and 2025. A list of sources can be found on page 99.



## Community Vision

Our village is thriving and the people living here have increased cultural, employment, housing, and partnership opportunities.

From Community Strategic Direction 2017-2022.

## Community Values

The people | Our culture  
Subsistence lifestyle | Helping one another | Traditions and values |  
The scenery | Our history

From 2024 community meeting notes.

## Community Trends: People, Schools, and Cost of Living



### Population

66 in 2023, down 21% from 2013. ↓



### School

20 students enrolled (K-12) in academic year 2023-24, up 11% from 2013-14. ↑



### Cost of Living

Electricity: In 2023, 100% of Chignik Lake's electricity was produced by diesel generators, costing \$0.70/kWh in 2023, down from \$0.86 2012, without PCE. ↓

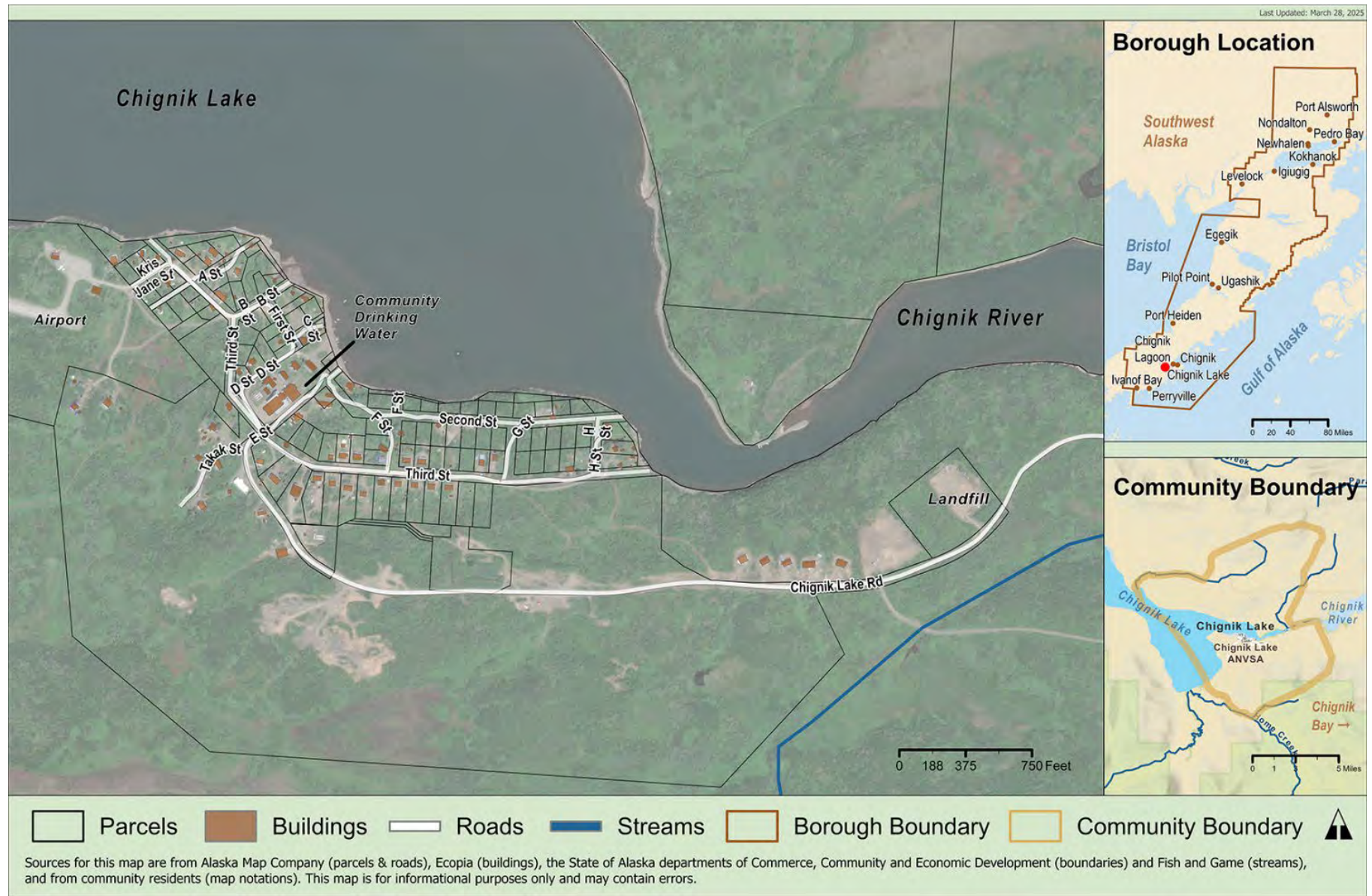


## Potential Community Priorities Over the Next Five Years

Sector	Priority
<b>Land Use and Environment</b>	<ul style="list-style-type: none"> <li>▪ <b>Protect fishing, land, and subsistence access.</b></li> <li>▪ <b>Clean up contaminated sites to prevent pollutants from leaching into groundwater and surface waters.</b></li> </ul>
<b>Housing</b>	<ul style="list-style-type: none"> <li>▪ <b>Weatherize/rehabilitate aging and/or vacant houses.</b></li> <li>▪ <b>Complete Elder home renovations.</b></li> <li>▪ Develop new housing on village land.</li> </ul>
<b>Community Facilities and Services</b>	<ul style="list-style-type: none"> <li>▪ <b>Keep the school open.</b></li> </ul>
<b>Transportation</b>	<ul style="list-style-type: none"> <li>▪ <b>Continue to explore development of the Intertie Road, connecting Chignik Lake, Chignik Bay, and Chignik Lagoon.</b></li> <li>▪ <b>Provide transportation service for Elders</b> (e.g., Elder van).</li> <li>▪ Complete resurfacing and extension of the runway.</li> </ul>
<b>Utilities</b>	<ul style="list-style-type: none"> <li>▪ <b>Address inadequate well-water pressure and the boil water advisory notice for community water supply, including upgrades to water tower and constructing a new pump house.</b></li> <li>▪ Maintain and improve oil collection program.</li> <li>▪ Increase use of alternative energy (wind and hydro power).</li> </ul>
<b>Economic Development</b>	<ul style="list-style-type: none"> <li>▪ <b>Support development of the Intertie Road</b> (see Transportation), which could lower the cost of living and increase economic opportunities via the Chignik Bay port and opportunities for shared infrastructure.</li> </ul>
<b>Culture and Wellness</b>	<ul style="list-style-type: none"> <li>▪ <b>Explore new funding for the school lunch program.</b></li> <li>▪ Provide culture-based activities, sports programming and travel opportunities for young people.</li> <li>▪ Provide school bus transportation for students to and from school.</li> <li>▪ Help each other more.</li> </ul>

**Top priorities are bold.** \* Listed on 2025 Capital Improvement Project List (short- and long-term priorities).

# Map



## Community Infrastructure, Needs, and Resources

Service/Facility	Provider	Current Facilities	Provider, Current Facilities, Issues, and Needs
<b>Chignik Lake Facilities and Services</b>			
<b>Water / Wastewater</b>	Village Council well water in wood stave tank storage. Piped water, sewer system and sewage lagoon.		Water system improvements underway. Have technically been on boil water notice since July 2023.
<b>Solid Waste</b>	Village Council	Class 3 unpermitted landfill	
<b>Communications</b>	Phone: ACS, AT&T, Alascom, GCI Internet: GCI		VHF was provided to all homes last year to alert others about bears, events, meetings, etc. but people are not using them.
<b>Electricity</b>	Chignik Lake Electric Utility, Inc.	Three diesel generators (80kW, 90kW, 125kW) Assumed electric utility in fall 2011. Hydro and wind study completed.	
<b>Bulk Fuel</b>	Village Council: 42,000 gallons LPSD: 45,400 gallons Total capacity: 87,400 gallons		
<b>Public Safety</b>	State Trooper (King Salmon)		
<b>Fire and Emergency</b>	Fire department, trained firefighters, clinic and first responders provides EMS Code Red Unit		
<b>Medical</b>	Chignik Lake Clinic Built 2005 Village Council owns; BBAHC operates		
<b>School(s)</b>	LPSD School Building.		School has to boil water and use distiller. Has its own well that they've not been using the past 3-4 years; they are looking into whether it's possible to connect the school well with the village well. Important to keep the school and school lunch program going.

<b>Service/Facility</b>	<b>Provider</b>	<b>Current Facilities</b>	<b>Provider, Current Facilities, Issues, and Needs</b>
<b>Governance</b>	Chignik Lake Village/ Tribal Council Village Council and Tribal Council Building		
<b>Recreation</b>			
<b>Post Office</b>	US Post Office		
<b>Other community facilities or services</b>			
<b>Roads and Bridges</b>			Intertie road would help all communities
<b>Trails</b>			
<b>Marine</b>	Village Council	One barge landing. Small boat launch/haul out.	
<b>Aviation</b>	ADOT/PF	State-owned Airstrip 2,800 ft long	
<b>Public transport</b>			Elder van and school bus needed.
<b>Other transportation-related resources</b>		CAT excavator, Bobcat skid steer, dozer, dump truck	
<b>Village Corporation</b>	Chignik River Limited		
<b>Freight carrier(s)</b>			
<b>Store(s)</b>			
<b>Other</b>			Brush cutting crew clearing alder overgrowth now; has provided some short-term jobs.
<b>Housing (approximate no.)</b>		Village has land for housing development.	BBHA Weatherization program dormant; people don't want to apply for it.



<b>Service/Facility</b>	<b>Provider</b>	<b>Current Facilities</b>	<b>Provider, Current Facilities, Issues, and Needs</b>
<b>Hazard mitigation and/or climate plans</b>			
<b>Notable environmental hazards</b>			
<b>Other important land use notes</b>			<p>Alders are overgrown on roads, trails, salmonberry bushes (crowding out berries).</p> <p>Lake: water level decreasing, doesn't freeze as much – ice freezes and unfreezes throughout the winter, so winter transportation across the lake for hunting is not reliable.</p> <p>Water seems warmer and there have been fishing disasters.</p>

# Perryville

The Perryville community plan was developed through background research and community meetings and conversations with leadership members in 2024 and 2025. A list of sources can be found on page 99.



## Community Vision

Perryville is a self-sufficient community with a healthy natural environment that is rich in subsistence foods, has a strong and vibrant commercial fishery, and is maximizing the use of alternative energy resources.

From Community Strategic Direction 2017-2022.

## Community Values

Community | Subsistence lifestyle | Our school | Access to ocean | Family and friends | Peaceful | Open space | Little pollution

From 2024 community meeting notes.

## Community Trends: People, Schools, and Cost of Living



### Population

77 in 2023, down 36% from 2013. ↓



### School

20 students enrolled (K-12) in academic year 2023-24, down 29% from 2013-14. ↓



### Cost of Living

- Electricity: In 2021, 97% of Perryville's electricity was produced by diesel generators, costing \$0.95/kWh – the same as 2012, without PCE. 3% of Perryville's electricity was from wind turbines.

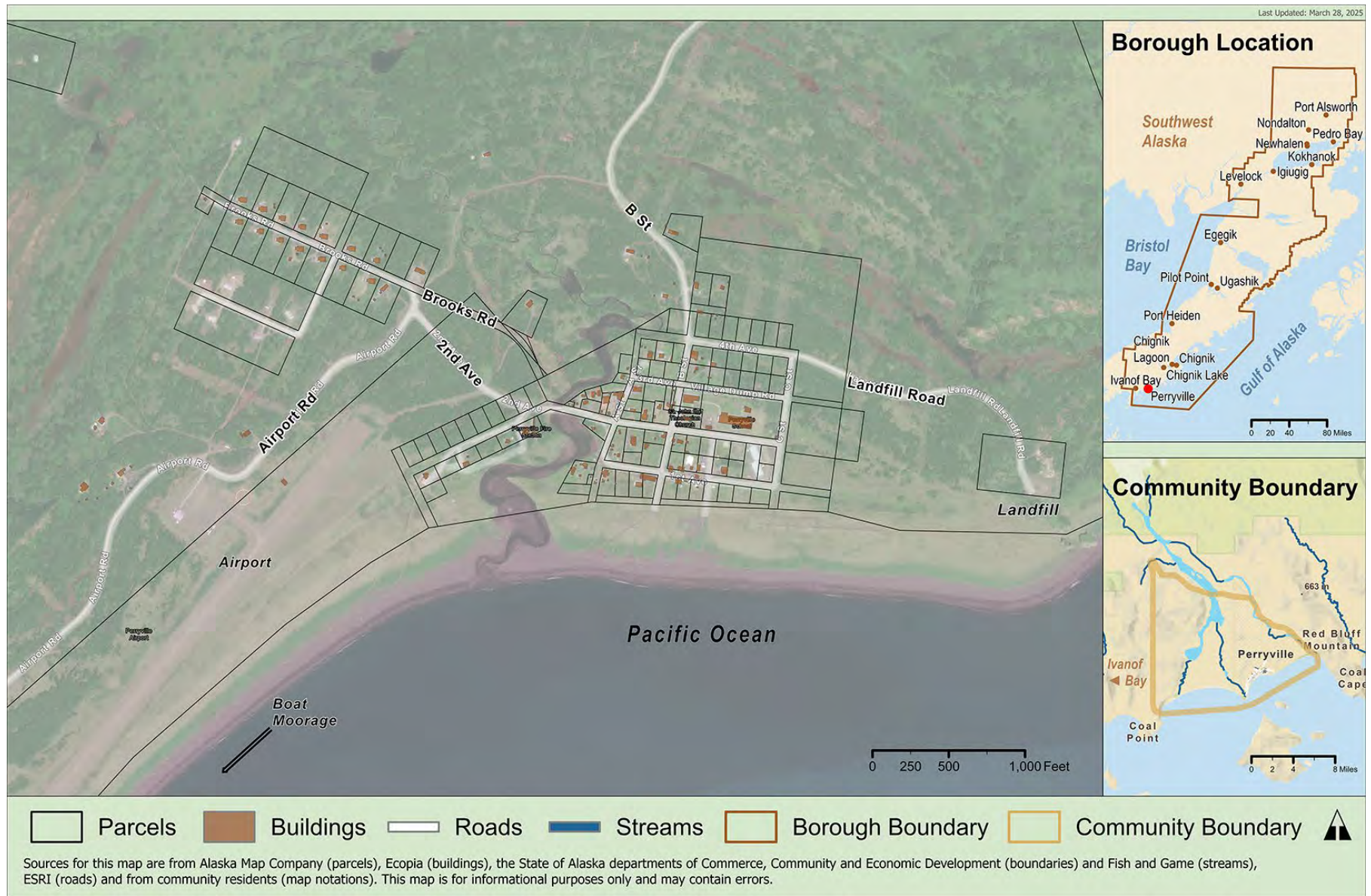
## Potential Community Priorities Over the Next Five Years

Sector	Priority
<b>Land Use and Environment</b>	▪ <b>Protect access to subsistence activities.</b>
<b>Housing</b>	▪ <b>Address housing needs.</b>
<b>Community Facilities and Services</b>	<ul style="list-style-type: none"> <li>▪ <b>Complete a public dock feasibility design study. *</b></li> <li>▪ <b>Acquire an incinerator for the community dump. *</b></li> <li>▪ <b>Acquire a garbage pick-up vehicle. *</b></li> <li>▪ Complete a new water treatment plant.</li> </ul>
<b>Transportation</b>	▪ <b>Address airfare prices.</b>
<b>Utilities</b>	▪ <b>Address high fuel and power costs.</b>
<b>Economic Development</b>	<ul style="list-style-type: none"> <li>▪ <b>Find a gravel source. *</b></li> <li>▪ <b>Recruit teachers or train more from the community.</b></li> <li>▪ Build a cannery with the cooperation of other villages.</li> </ul>
<b>Culture and Wellness</b>	<ul style="list-style-type: none"> <li>▪ <b>Clear alders and control alder growth. *</b></li> <li>▪ <b>Recruit health aides.</b></li> </ul>

**Top priorities are bold.** \* Listed on 2025 Capital Improvement Project List (short- and long-term priorities).



# Map





## Community Infrastructure, Needs, and Resources

Service/Facility	Provider	Current Facilities	Issues, Notes, and Needs
<b>Perryville Facilities and Services</b>			
<b>Water / Wastewater</b>	Village Council/Native Village of Perryville	Piped water from nearby stream. Treatment plant and 60,000-gallon water storage tanks. Community septic. New 60,000-gallon tank. Homes on individual septic.	Building new treatment lagoon, plant and septic pump in 2025.
<b>Solid Waste</b>	Native Village of Perryville	Unpermitted Landfill	
<b>Communications</b>	Phone: ACS, AT&T, Alascom, GCI Internet: GCI, HughesNet AK Tribal Spectrum installing broadband. Village will own the system.		
<b>Electricity</b>	Native Village of Perryville	Two generators Ten 1.5 kW wind turbines, Rural Power System Upgrade in 2016; turbines working well.	The <a href="#">Perryville powerhouse</a> is an islanded/microgrid prime power house module that includes heat recovery, wind integration, and a secondary load controller. Installed in 2016. Heat from engines used at the school.
<b>Bulk Fuel</b>	Native Village of Perryville has three 28,000-gallon tanks (fuel); one 15,000-gallon tank (gasoline), and one 3,000-gallon tank (gasoline), for a total capacity of 102,000 gallons. LPSD is now tied into village fuel tank/powerhouse.		
<b>Public Safety</b>	State Trooper (based in King Salmon)		
<b>Fire and Emergency</b>	Fire Department, Clinic provides EMS Code Red Unit, ambulance		
<b>Medical</b>	Native Village of Perryville owns, BBAHC operates the Emillian		Itinerant staff; want full-time staff (for Elders especially). Much dissatisfaction with the

Service/Facility	Provider	Current Facilities	Issues, Notes, and Needs
	Health Clinic. Built in 2009, part of the office complex.		service from BBAHC. Discussed possibility of pulling out of BBAHC, but the process takes several years.
<b>School(s)</b>	LPSD School Building		Difficulties keeping consistent staff/teacher. Community would like someone from the School District to attend graduation each year.
<b>Governance</b>	Native Village of Perryville Village Council and Tribal Office		
<b>Recreation</b>		Playground	
<b>Post Office</b>	US Post Office		
<b>Other community facilities or services</b>	Native Village of Perryville Tsunami Shelter Built in 1996. Internet is being installed.		
<b>Roads and Bridges</b>	Bridge and gravel roads.		
<b>Trails</b>			
<b>Marine</b>	Village Council/Native Village of Perryville.	One boat haul under construction. Barge landing funded in 2010 by the Denali Commission.	
<b>Aviation</b>	ADOT/PF	State-owned gravel runway, 3,300 feet long runway.	Grant Aviation flies daily.
<b>Public transport</b>			
<b>Other transportation-related resources</b>	Native Village of Perryville	Skid steer, loader	
<b>Village Corporation</b>	Oceanside Corporation		

Service/Facility	Provider	Current Facilities	Issues, Notes, and Needs
<b>Freight carrier(s)</b>			
<b>Store(s)</b>			
<b>Other</b>			<p>Current jobs: grant-funded construction jobs, land clearing for transportation.</p> <p>Tourism: need amenities and training. Trying to get the Alaska ferry to stop here.</p> <p>People value subsistence activities/lifestyle.</p> <p>Need to be a jack-of-all-trades to live and work here.</p> <p>Fishing: C2E Community Quota working in Kvichak Fisheries, halibut. King Salmon for processing.</p>
<b>Housing (approximate no.)</b>			<p>The last housing built in 2012.</p> <p>Some existing houses are unrepairable and need to be torn down.</p> <p>Some houses are overcrowded (10 people/home).</p>
<b>Hazard mitigation and/or climate plans</b>			
<b>Notable environmental hazards</b>			
<b>Other important land use notes</b>			<p>Sand bar is moving.</p> <p>Seeing unusual alder growth, new kinds of birds.</p>

## Sources

Alaska Department of Labor and Workforce Development, Research and Analysis Section. Alaska Population Estimates by Borough, Census Area, City, and Census Designated Place (CDP), 1990 to 2023 (multiple decade sets).

<https://live.laborstats.alaska.gov/data-pages/alaska-population-estimates>.

Alaska Department of Education and Early Development, District Enrollment. Lake and Peninsula K-12 School Enrollment (2014-2023).

<https://education.alaska.gov/data-center>.

Alaska Energy Authority, Power Cost Equalization Program FY2012, FY2023. Lake and Peninsula Borough Average Price of Fuel (Per Gallon), FY12 and FY23.

<https://www.akenergyauthority.org/What-We-Do/Power-Cost-Equalization/PCE-Reports-Publications>

2012 residential effective rate adjusted for inflation to 2023 dollars using the Bureau of Labor Statistics CPI Inflation Calculator.

<https://data.bls.gov/cgi-bin/cpicalc.pl>

Chignik Lagoon Utilities Gas Station Schedule.

<https://www.chigniklagoon.net/chignik-lagoon-utilities.html>.

City of Port Heiden website.

<https://www.nativevillageofportheiden.com/city-of-port-heiden.html>

Aviation fuel prices from Iliamna Development Corporation

[https://airnav.com/airport/PAIL/ILIAMNA\\_DEV\\_CORP](https://airnav.com/airport/PAIL/ILIAMNA_DEV_CORP)

Kokhanok Utility Rates.

<https://www.kokhanok.com/program/program-temp-kokhanok-utility/>

U.S. Department of Energy Arctic Energy Office (August 14, 2024). DOE Funds Five Projects in Alaska for Energy Improvements in Rural or Remote Areas (ERA) program.

<https://www.energy.gov/arctic/articles/doe-funds-five-projects-alaska-energy-improvements-rural-or-remote-areas-era#:~:text=Kokhanok's%20Paradigm%20Shift%20%2D%20Big%20Battery,%E2%80%94to%20Kokhanok%2C%20Alaska's%20microgrid>.

Igiugig RivGen® Power System.

<https://tethys.pnnl.gov/project-sites/rivgen-power-system>.